

**CORNER RECORD  
WARRICK COUNTY**

DESCRIPTION :

SE CORNER SW<sup>1</sup>/<sub>4</sub> SW<sup>1</sup>/<sub>4</sub>

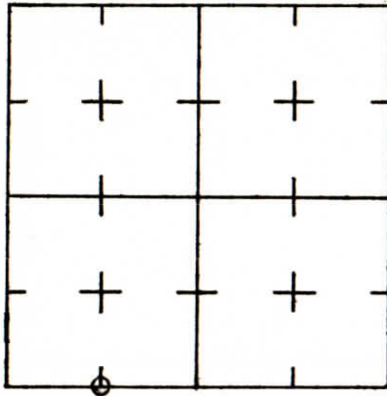
SECTION 32, T. 6 S. R. 9 W.

2<sup>nd</sup> PRINCIPLE MERIDIAN

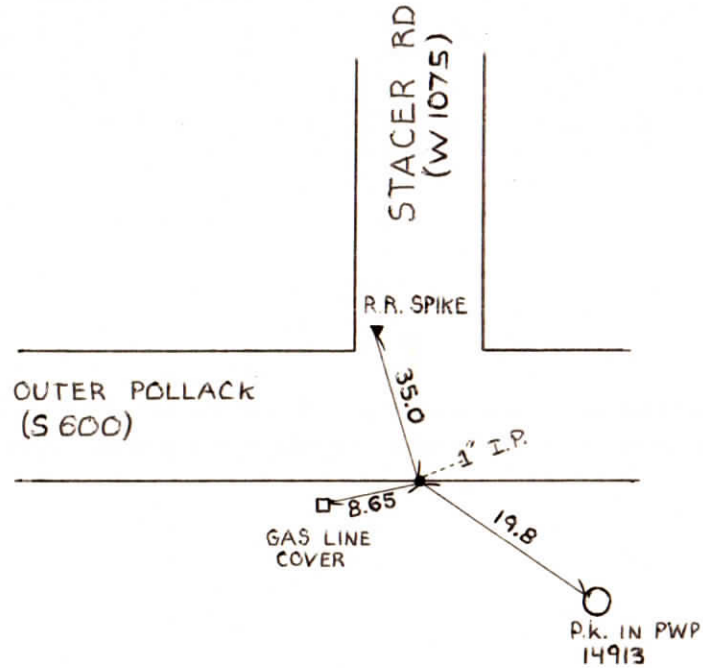
**WARRICK COUNTY SURVEYOR  
MICHAEL IRVIN**



INDICATE CORNER REFERENCED



DESCRIBE CORNER REFERENCED



STATE PLANE COORDINATE DATA

INDIANA ZONE: WEST

X \_\_\_\_\_

Y \_\_\_\_\_

ESTABLISHED BY:

\_\_\_\_\_

APPROVED BY *NOT VERIFIED*

DATE  
10-24-73

REFERENCED BY:

DATE

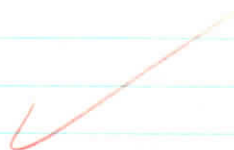
000065

SE cor SW $\frac{1}{4}$  SW $\frac{1}{4}$  sec 32 T6s R9w

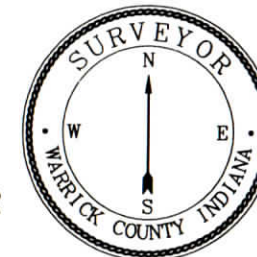
Type of Monument: 1" I.P.

Date of reference: 10-24-73

referenced by: SWC



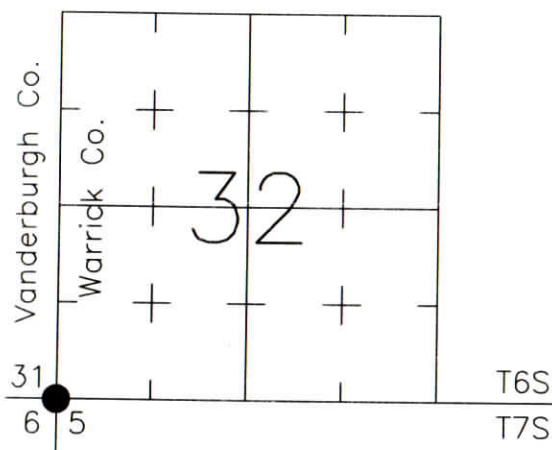
# CORNER RECORD WARRICK COUNTY



DESCRIPTION:  
SOUTHWEST CORNER \_\_\_\_\_  
SECTION 32, T. 6 S., R. 9 W.  
2nd PRINCIPLE MERIDIAN

WARRICK COUNTY SURVEYOR  
KARAN HARGRAVE-BARNHILL

INDICATE CORNER REFERENCED:



MONUMENT TYPE: PK NAIL  
SIZE:  
DEPTH/HEIGHT: FLUSH  
REFERENCE TIE DRAWING:

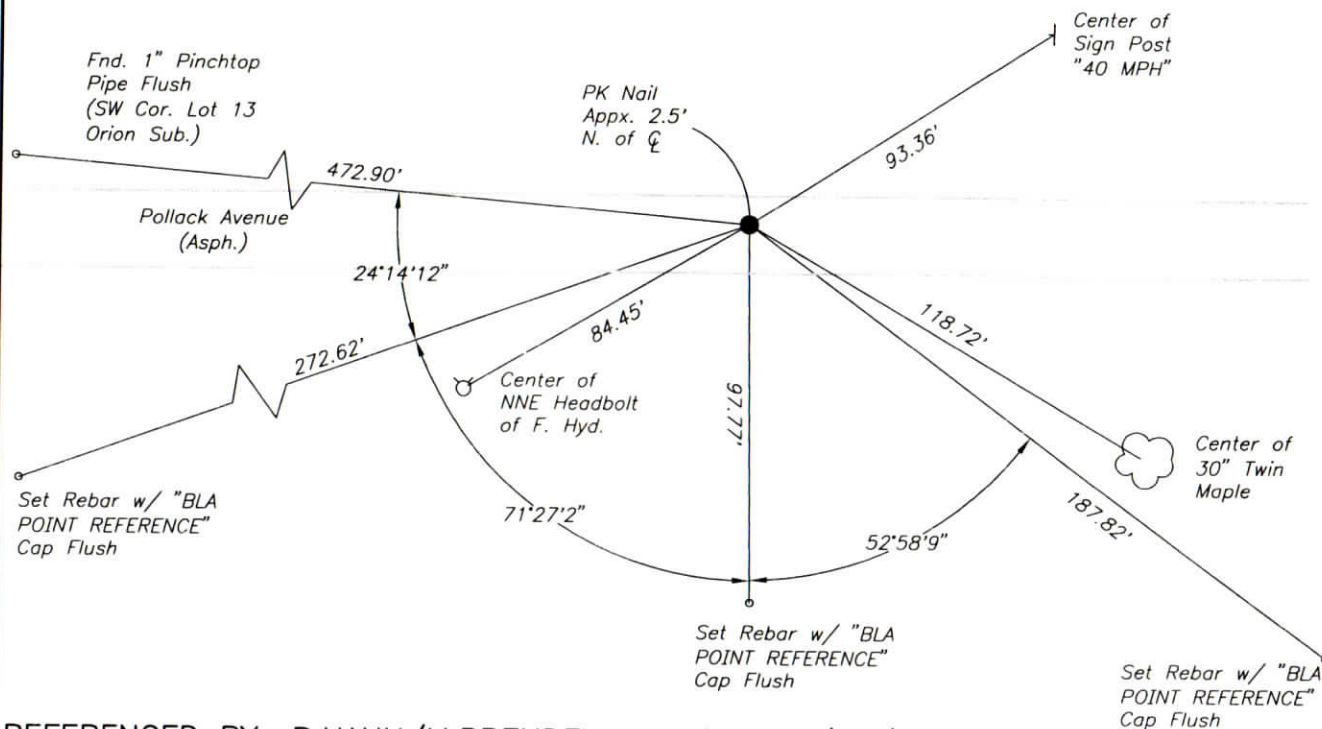
FOR NOTES ON CORNER HISTORY SEE REVERSE.

STATE PLANE COORDINATE DATA:  
INDIANA WEST ZONE, NAD 83 (1997)  
U.S. SURVEY FEET

X 2847079.51

Y 1009877.98

COORDINATES ESTABLISHED BY:  
Douglas G. McDonald, PE LS, Vand. Co.  
Surveyor's Office  
APPROVED BY:



REFERENCED BY: R.HAHN/M.BRENDEL

DATE: 8/20/02

DATE:

APPROVED BY: P.JONES, RLS#9600016

DATE: 9/4/02

CORNER FILE CODE:  
T6S-R9W-Z-05

CORNER HISTORY:

CORNER FILE CODE:  
T6S-R9W-Z-05

ORIGINAL USPLS SURVEY: Corner established by Jacob Fowler, Dec. 14, 1805 "Post".

COUNTY SURVEYOR'S BOOKS: Book 1 P. 123: John C. Frary WCS Oct. 23, 1857 "Old Cor. Stone Perpetuated marked S 5".

Vand. Co. Book C, P. 97: Chas. B. Bateman VCS March 29, 1871 "Stone by Warrick Co. Surv".

Vand. Co. Book D, P. 101: H.A.Genung Dep. VCS w/ Mr. Meyers WCS September 14, 1894 "Stone in Road".

Book 3 P. 305: W.J.Wells, Surveyor, April, 1939 "Stone" (I.Pins set 25'S of sec. line @ 977' and 1218' E of corner).

OTHER SURVEYS AND PLATS: "Corner Code System" card shows stone and notes "IP 4-23-57 by S. Biggerstaff".

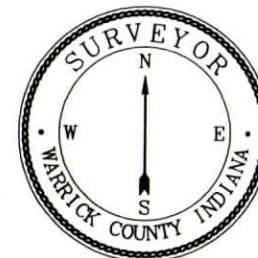
The 1957 plat of Orion Subdivision (Vanderburgh County) ties to the corner (monument not identified).

The Vanderburgh County Surveyor's office provided coordinates (dated 2002) for a found PK nail.

VERIFICATION OF CORNER POSITION: August, 2002: The PK nail shown was found in place. Ties were made to a 3/4" pipe found at the NE corner of Lot 13 of Orion Subdivision and to 1" pinchtap pipes found at the SW corner of lot 13 and the SE corner of Lot 12; these confirmed the PK nail's position within 0.2'.

Perry E. Jones 9/4/02

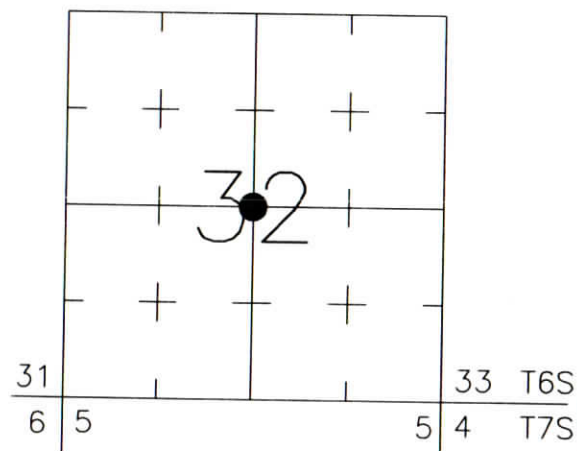
# CORNER RECORD WARRICK COUNTY



DESCRIPTION:  
 SOUTHWEST CORNER NORTHEAST QUARTER  
 SECTION 32, T. 6 S., R. 9 W.  
 2nd PRINCIPLE MERIDIAN

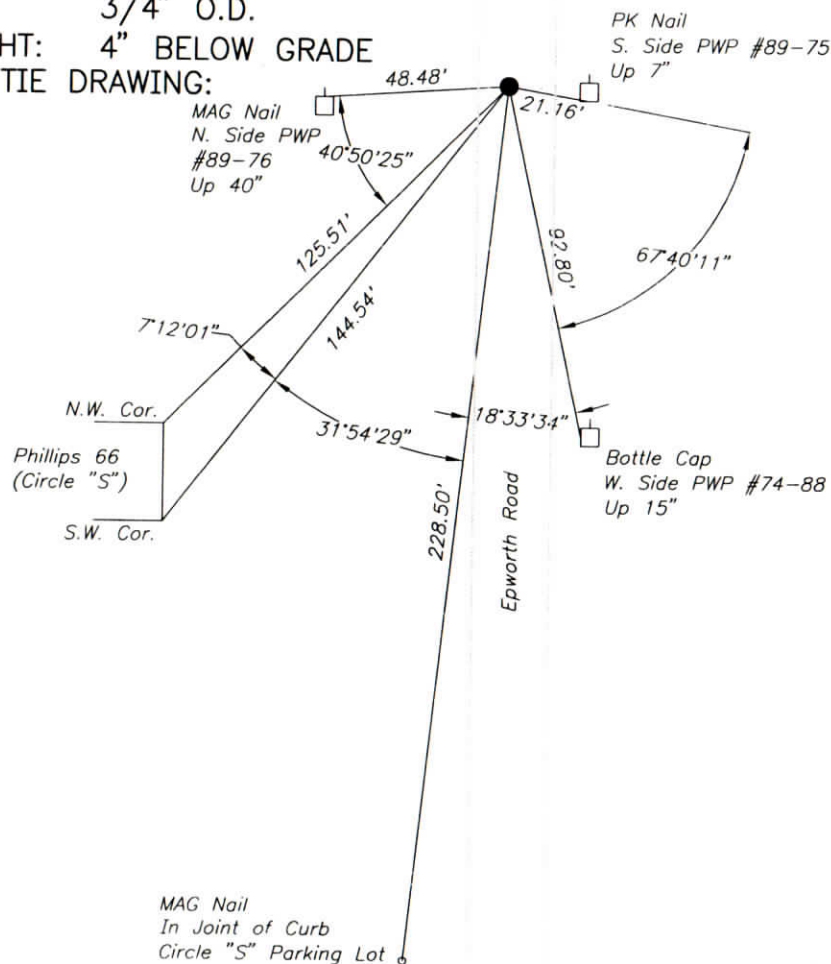
WARRICK COUNTY SURVEYOR  
 KARAN HARGRAVE-BARNHILL

INDICATE CORNER REFERENCED:



MONUMENT TYPE: IRON PIPE  
 SIZE: 3/4" O.D.  
 DEPTH/HEIGHT: 4" BELOW GRADE  
 REFERENCE TIE DRAWING:

FOR NOTES ON CORNER HISTORY SEE REVERSE.



STATE PLANE COORDINATE DATA:  
 INDIANA WEST ZONE, NAD 83 (1997)  
 U.S. SURVEY FEET

X \_\_\_\_\_

Y \_\_\_\_\_

COORDINATES ESTABLISHED BY:

APPROVED BY:

DATE:

REFERENCED BY: K.KLEIN/M.BURRESS

APPROVED BY: P.JONES, RLS#9600016

DATE: 8/27/02

DATE: 9/6/02

CORNER FILE CODE:  
 T6S-R9W-X-07

CORNER HISTORY:

CORNER FILE CODE:  
T6S-R9W-X-07

ORIGINAL USPLS SURVEY: (Center of Section not monumented by USPLS Survey).

COUNTY SURVEYOR'S BOOKS: Book 1 P. 112: John C. Frary WCS Feb. 1859 "Marked Post".

OTHER SURVEYS AND PLATS: A plat of survey by Danny K. Leek dated 7/20/88 shows a 3/4" pipe found at the corner.

In Doc. 1995R-006907, David L. Savage states that the monuments from the 1988 Leek survey were found in place and matched the plat measurements.

VERIFICATION OF CORNER POSITION: The 3/4" O.D. pipe shown was found in place, as well as other monuments shown on the 1988 Danny Leek survey; measured dimensions agreed with said survey.

Perry E. Jones 9/6/02

CORNER RECORD  
WARRICK COUNTY

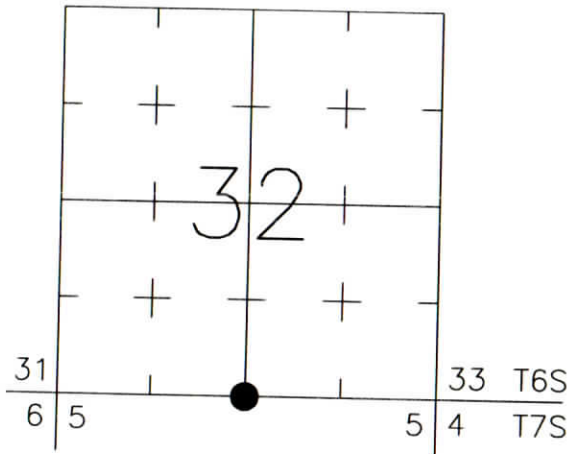


DESCRIPTION:  
SOUTHWEST CORNER SOUTHEAST QUARTER  
SECTION 32, T. 6 S., R. 9 W.  
2nd PRINCIPLE MERIDIAN

WARRICK COUNTY SURVEYOR  
KARAN HARGRAVE-BARNHILL

FOR NOTES ON CORNER HISTORY SEE REVERSE.

INDICATE CORNER REFERENCED:



MONUMENT TYPE: ALUM. DISK  
SIZE:  
DEPTH/HEIGHT: 5" BELOW GRADE  
REFERENCE TIE DRAWING:

STATE PLANE COORDINATE DATA:  
INDIANA WEST ZONE, NAD 83 (1997)  
U.S. SURVEY FEET

X ---

Y ---

COORDINATES ESTABLISHED BY:

APPROVED BY:

DATE:

MAG Nail Set Flush  
N. Side Pollack @  
Willow Brook Ct.

Pollack Avenue  
(Asph.)

Cor. 6'  
Vinyl  
Fence

Cor. 6'  
Vinyl  
Fence

Fnd. 5/8"  
Rb. 4" BG  
(On Line)

MAG Nail  
E. Side  
42" Cott.  
Up 18"

8' Lamp Post

MAG Nail Set Flush  
N. Side Pollack  
@drive

Fiber Optic Marker

REFERENCED BY: D.DREES/K.KLEIN  
/C.BINKLEY

APPROVED BY: P.JONES, RLS#9600016

DATE: 8/26/02

DATE: 8/27/02

CORNER FILE CODE:  
T6S-R9W-Z-07

CORNER HISTORY:

CORNER FILE CODE:  
T6S-R9W-Z-07

ORIGINAL USPLS SURVEY: Corner established by Jacob Fowler, Dec. 14, 1805 "Post".

COUNTY SURVEYOR'S BOOKS: Book 1 P. 112: John C. Frary WCS Feb. 1859 Stone Marked - Orig. Tree NE Perpetuated".

OTHER SURVEYS AND PLATS: The 1993 plat of Willow Brook Estates Sec. A shows a calculated corner location based on an AES/Warrick Engineering survey dated May 22, 1992.

VERIFICATION OF CORNER POSITION: August, 2002: The aluminum disk shown was found in place. Measured dimensions to rebars found at the SE corner of Lot 1 and the NE corner of Lot 2 of Willow Brook Estates Section "A" matched plat dimensions within 0.04'.

Perry E. Jones 8/27/02



# CORNER RECORD WARRICK COUNTY

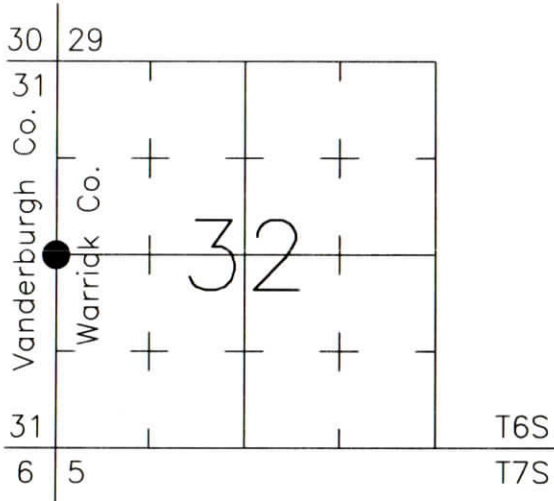


DESCRIPTION:  
SOUTHWEST CORNER NORTHWEST QUARTER  
SECTION 32, T. 6 S., R. 9 W.  
 2nd PRINCIPLE MERIDIAN

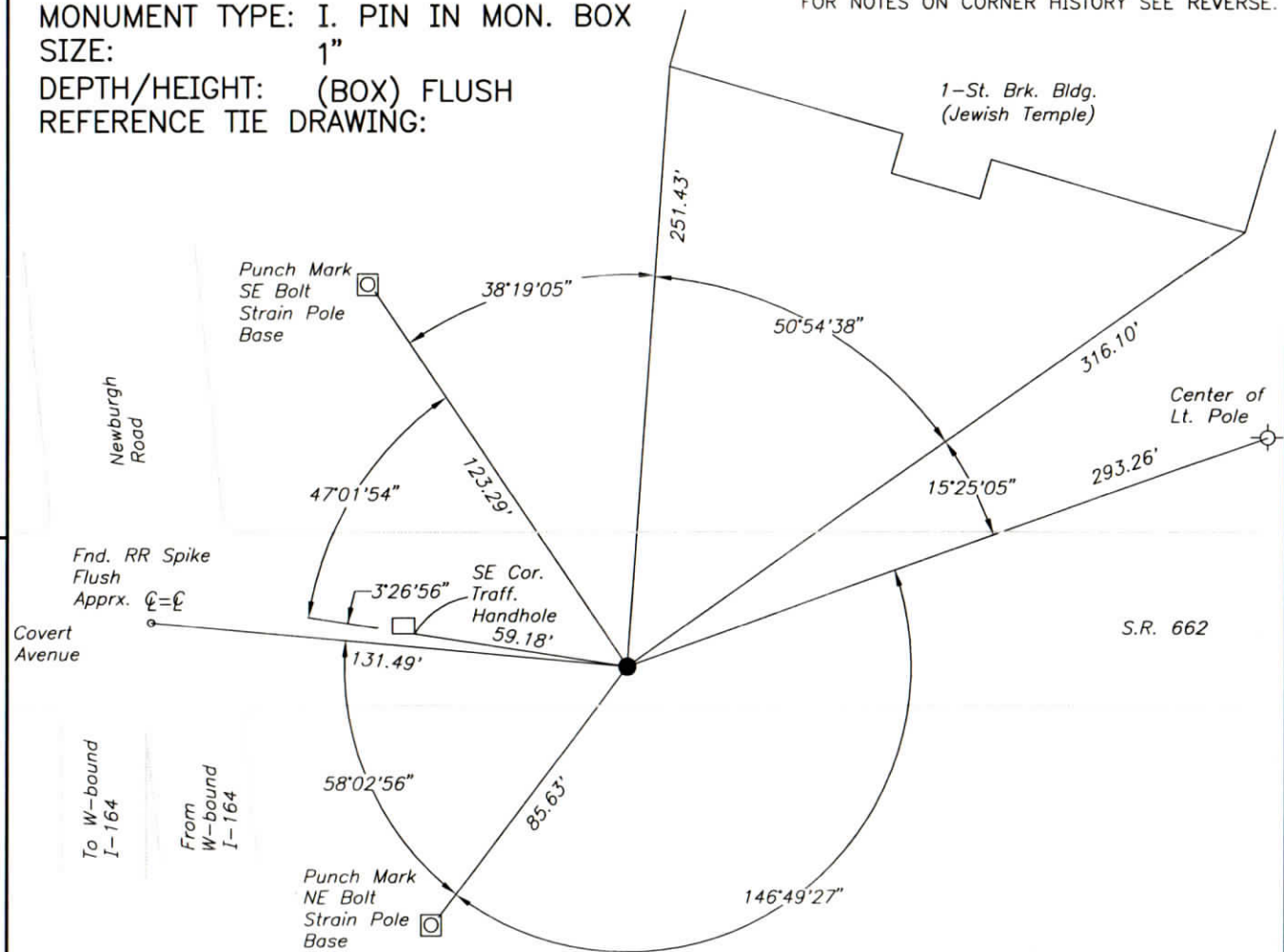
**WARRICK COUNTY SURVEYOR**  
 KARAN HARGRAVE-BARNHILL

FOR NOTES ON CORNER HISTORY SEE REVERSE.

INDICATE CORNER REFERENCED:



MONUMENT TYPE: I. PIN IN MON. BOX  
 SIZE: 1"  
 DEPTH/HEIGHT: (BOX) FLUSH  
 REFERENCE TIE DRAWING:



STATE PLANE COORDINATE DATA:  
 INDIANA WEST ZONE, NAD 83 (1997)  
 U.S. SURVEY FEET

X ---

Y ---

COORDINATES ESTABLISHED BY:

APPROVED BY:

DATE:

REFERENCED BY: K.KLEIN/G.M.BURRESS

DATE: 8/27/02

APPROVED BY: P.JONES, RLS#9600016

DATE: 8/30/02

CORNER FILE CODE:  
 T6S-R9W-X-05

CORNER HISTORY:

CORNER FILE CODE:  
T6S-R9W-X-05

ORIGINAL USPLS SURVEY: Corner established by Jacob Fowler, Dec. 19, 1805 "Post".

COUNTY SURVEYOR'S BOOKS: Book 1 P. 123: John C. Frary WCS Oct. 23, 1857 "Old Brg. Trees Standing - Stake Driven".

Vand. Co. Book C P. 97 Chas. B. Bateman VCS March 29, 1871 "Old Tree (Gum)" (shown in pond).

Vand. Co. Book D P. 101 H.A.Genung Dep. VCS w/ Mr. Meyers WCS September 14, 1894 "Orig. Tree Standing 1/2 mile corner".

OTHER SURVEYS AND PLATS: The Vanderburgh County Surveyor's office provided coordinates (dated 2002) for a 1" IP in Pot.

The 1977 plat of Newcomb's Addition (Vand. Co. Plat Record L-30) ties to the corner but does not identify a monument.

A plat of survey by Danny K. Leek (dated 1993, Doc. 1995R-1406) shows "Corner re-established by distances shown on Plat of Newcombs Addition".

A 1995 survey of a tract which became Rosebud Landing Section One (Doc. 1997R-005519) and Interstate Office Park (Doc. 2000R-004425) also used lot corners in Newcomb's Addition to re-establish the corner. Ties between this survey and the Danny Leek survey indicate that the re-established locations agreed within 1'.

A later plat of survey by Danny Leek (dated 1996, Doc. 1998R-001645) shows "monument found" at the corner. (It appears the monument box was placed between 1995 and 1996, as part of the Covert Avenue Extension project, Proj. M-E220(1) 1985, which called for a Type "B" Monument to be set.)

An approximate tie between Vanderburgh County's coordinates for the monument box and the 1995 Rosebud Landing survey indicates that the monument box is about 13' E and 21' N of the corner location calculated from the ties to Newcomb's Addition. Interstate 164 plans show a property corner (stone found) located 25' south of the 1/4 section corner (no stone). The Covert Avenue Extension road plans also show the stone 25' S of the 1/4 corner, and indicate that it was the stone shown on the Newcomb's Addition plat (and identified as the 1/4 corner on the plat). Neither the I-164 plans nor the Covert Avenue plans indicate the reasoning for showing the corner 25' N of the stone.

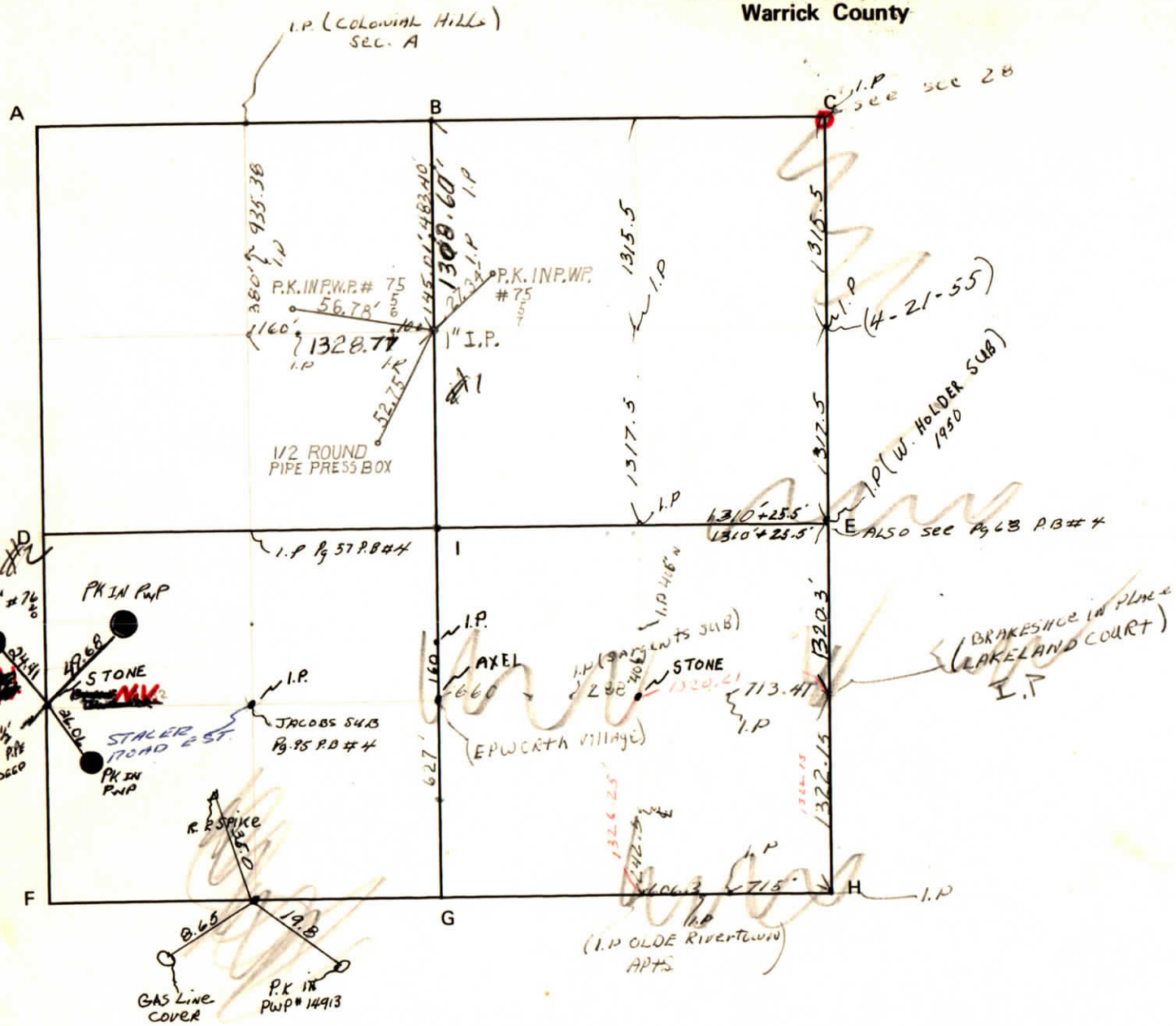
Douglas MacDonald of the Vanderburgh County Surveyor's office reports that the location of the monument box relative to other corners in Section 31 is fairly consistent with old chainages from the Vanderburgh County Surveyor's Book C page 97.

VERIFICATION OF CORNER POSITION: August, 2002: No additional ties were made to verify this corner. There are clearly questions as to whether the 1/4 section corner shown on the Newcomb's Addition plat was the true corner, and resulting uncertainties in this corner position on the order of 13' east-west and 25' north-south. The monument box was accepted as the apparent corner on the presumption that the Covert Avenue route survey had correctly evaluated the corner location and that the monument box was correctly placed per plans.

Perry E. Jones 8/30/02

CORNER CODE SYSTEM  
Warrick County

NOTES



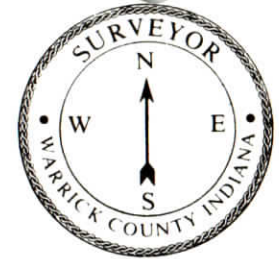
RECORD OF SECTION CORNERS

Warrick County

Section 32 Township 6 South Range 9 West 2nd Principle Meridian

Date	Cor	Location	Description of		Distance from Corner	Bearing from Corner (North Assumed)	Cond	Check By	Remarks
			Monument	Reference					
8/24/34	A	SW cor.	stone						
		NW-SW							
	B								
7-9-73 & 7-23-74	C	NE cor NE 1/4	7/8" re- bar & 1/2" rod	<del>1) Post</del> 2) Post NORA	<del>34.9'</del> 34.9'	<del>N 71° E</del> S 37° W	good	GAT	Found in place <del>Post of STOP sign</del> Post of SURVEY MARKER
0/50									George Reynolds
10/24/73			iron pin	1) r.r. spike 2) pk in pwp #14913 3) Gas line cover	35.0 19.8 8,65				swc intersections Stacer & Pollack Rd S SE 1/4 SW 1/4

CORNER RECORD  
WARRICK COUNTY



DESCRIPTION:

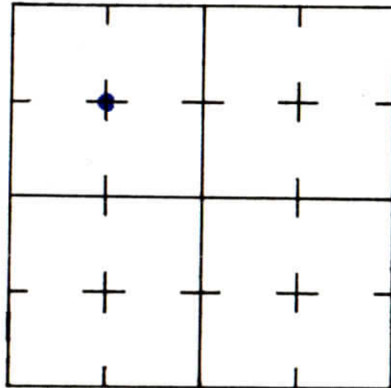
N.W. CORNER SE. NW.

SECTION 32, T. 6 S. R. 9 W.

2<sup>nd</sup> PRINCIPLE MERIDIAN

WARRICK COUNTY SURVEYOR  
KARAN HARGRAVE-BARNHILL

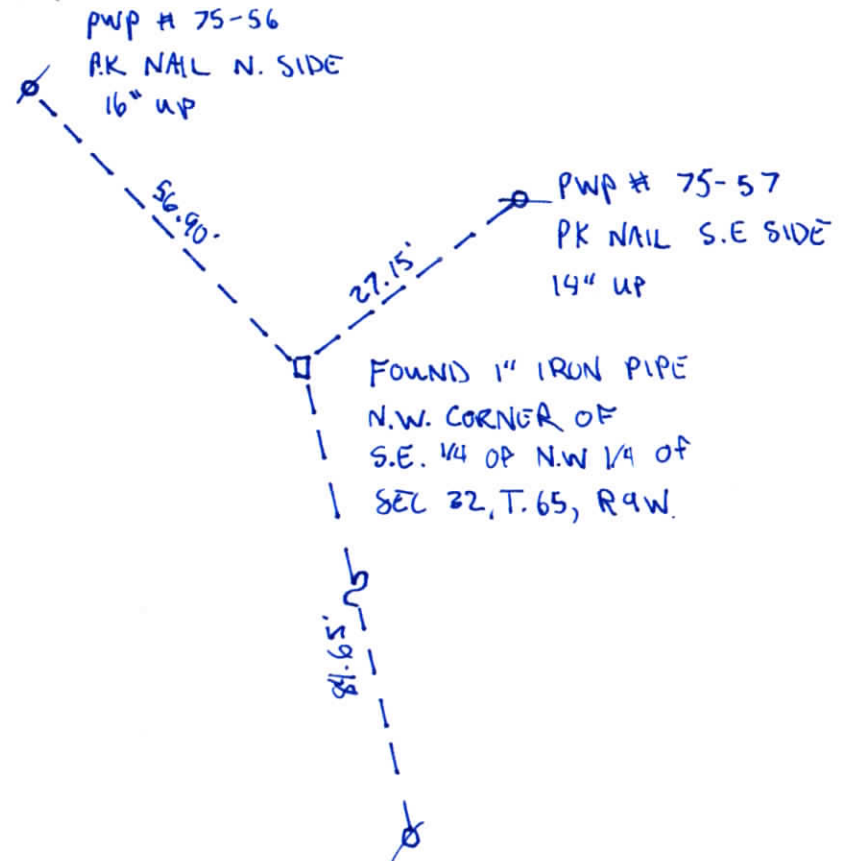
INDICATE CORNER REFERENCED



DESCRIBE CORNER REFERENCED

LANDMARK

N.E. CORNER



STATE PLANE COORDINATE DATA

INDIANA ZONE: WEST

X \_\_\_\_\_

Y \_\_\_\_\_

ESTABLISHED BY:

APPROVED BY

DATE

REFERENCED BY:

DATE

RALPH A. EASLEY Jr

12-22-92

**CORNER RECORD  
WARRICK COUNTY**



DESCRIPTION:

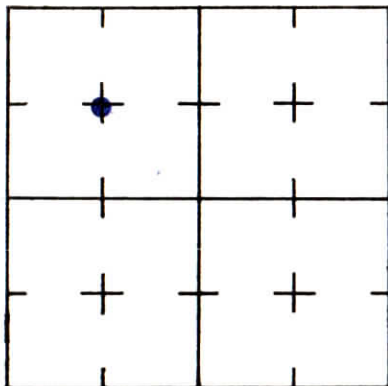
NW CORNER SE 1/4 NW 1/4

SECTION 32, T. 6 S. R. 9 W.

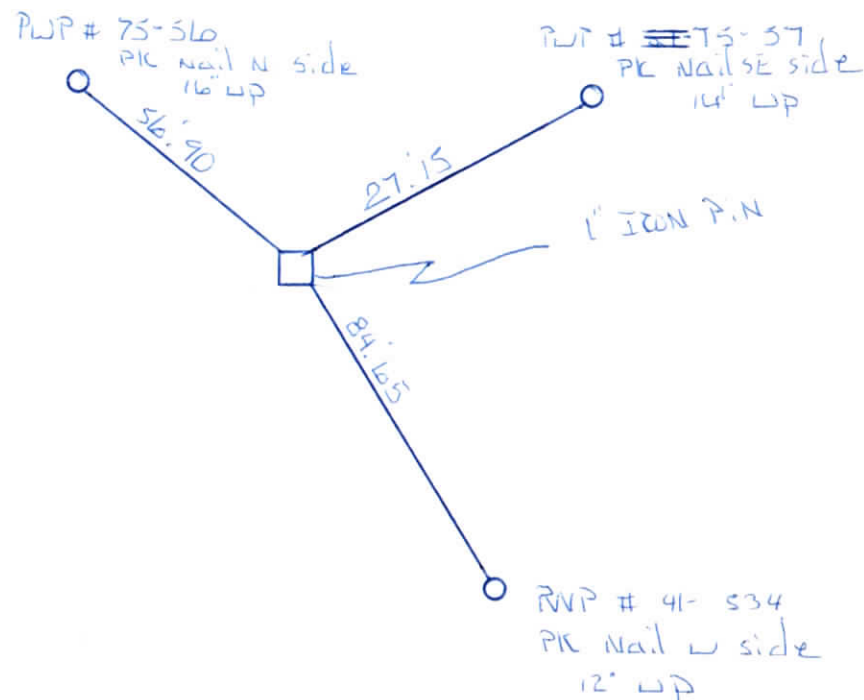
2<sup>nd</sup> PRINCIPLE MERIDIAN

**WARRICK COUNTY SURVEYOR  
MICHAEL IRVIN**

INDICATE CORNER REFERENCED



DESCRIBE CORNER REFERENCED



STATE PLANE COORDINATE DATA

INDIANA ZONE: WEST

X \_\_\_\_\_

Y \_\_\_\_\_

ESTABLISHED BY:

\_\_\_\_\_

APPROVED BY

DATE

REFERENCED BY:

DATE

*Ralph Easley Jr*

*JUNE 9 1992*

CORNER RECORD  
WARRICK COUNTY



DESCRIPTION:

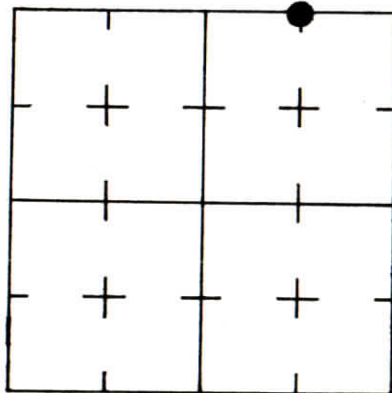
NE CORNER NWS 1/4 NE 1/4

SECTION 32, T. 6 S. R. 9 W.

2<sup>nd</sup> PRINCIPLE MERIDIAN

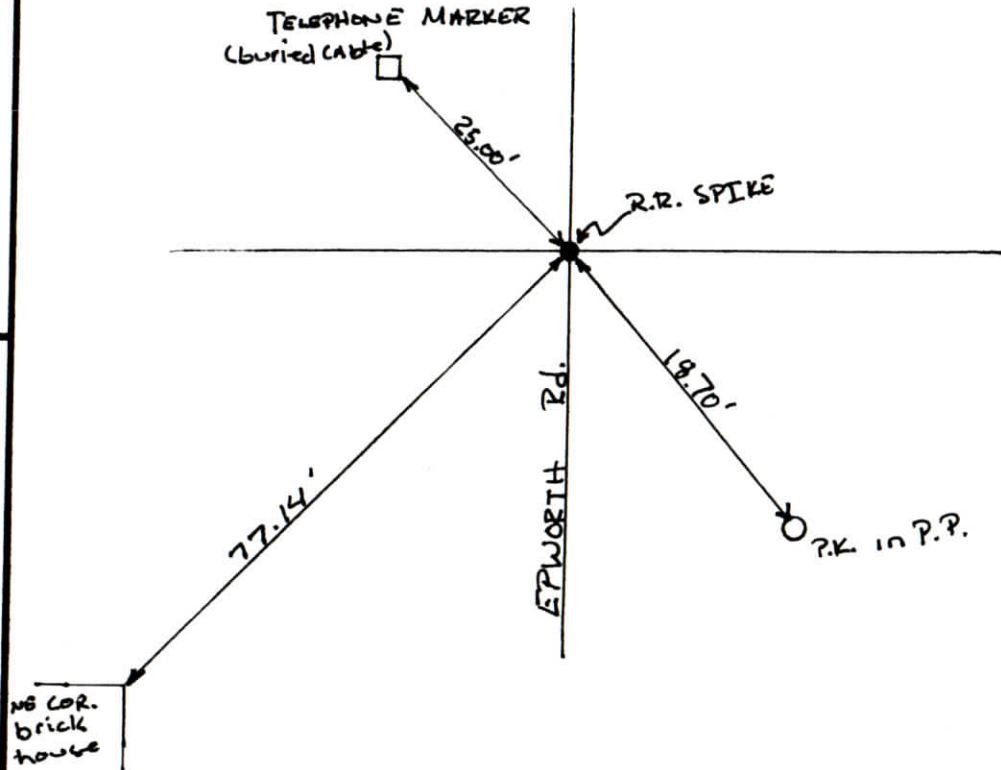
WARRICK COUNTY SURVEYOR  
KARAN HARGRAVE-BARNHILL

INDICATE CORNER REFERENCED



DESCRIBE CORNER REFERENCED

KENOSHA HILLS SUB  
SEC. "A"



STATE PLANE COORDINATE DATA

INDIANA ZONE: WEST

X \_\_\_\_\_

Y \_\_\_\_\_

ESTABLISHED BY:

APPROVED BY

DATE

REFERENCED BY:

DATE

ELMO D. DOCKERY

1-28-77

CORNER RECORD  
WARRICK COUNTY

DESCRIPTION :

SE CORNER SE 1/4 SE 1/4

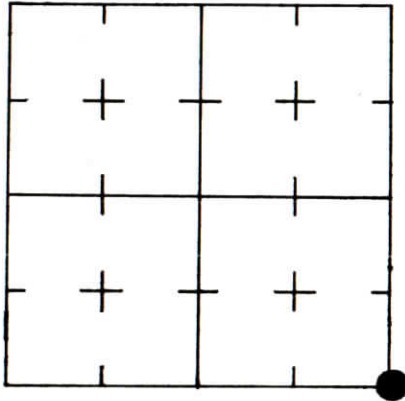
SECTION 32, T. 6 S. R. 9 W.

2nd PRINCIPLE MERIDIAN

WARRICK COUNTY SURVEYOR  
KARAN HARGRAVE-BARNHILL

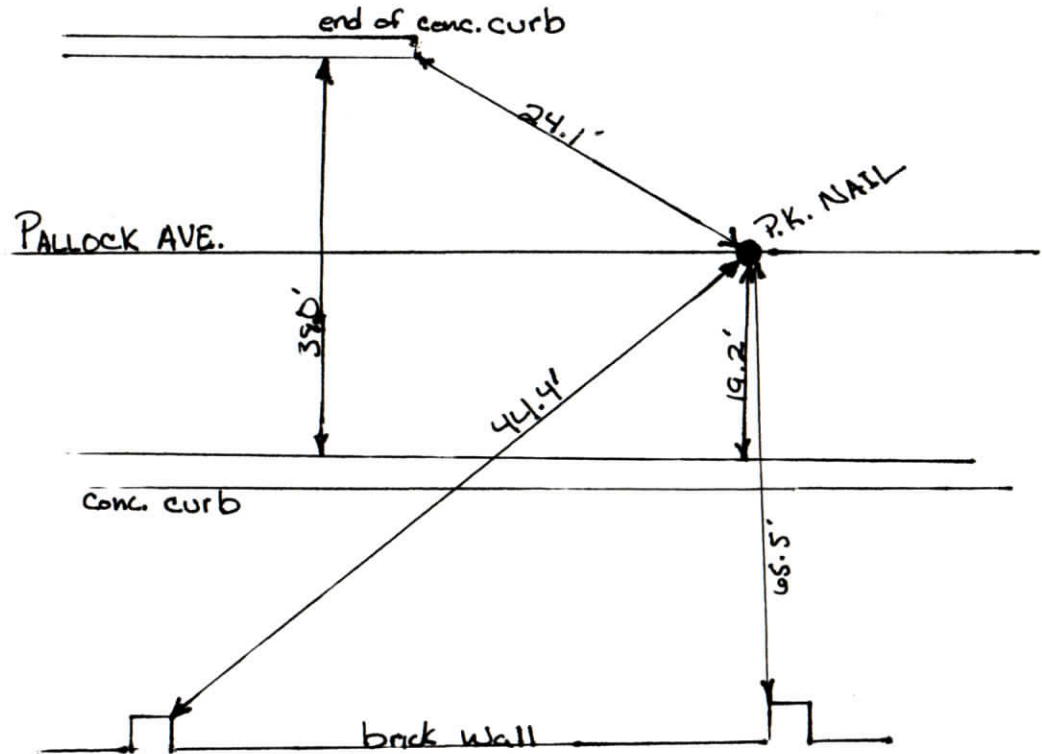


INDICATE CORNER REFERENCED



DESCRIBE CORNER REFERENCED

LAKELAND COURT



STATE PLANE COORDINATE DATA

INDIANA ZONE: WEST

X \_\_\_\_\_

Y \_\_\_\_\_

ESTABLISHED BY:

APPROVED BY

DATE

REFERENCED BY:

DATE

ALVIN L. PAUL

7-27-86



CORNER RECORD  
WARRICK COUNTY



DESCRIPTION :

NE CORNER N111 NE

SECTION 32, T. 6 S. R. 9 W.

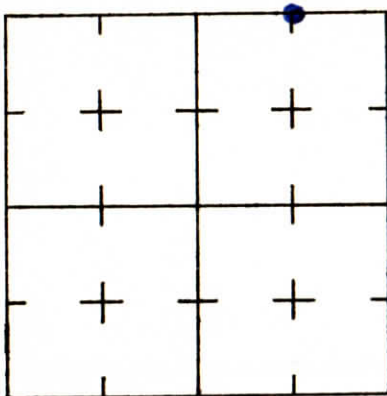
2<sup>nd</sup> PRINCIPLE MERIDIAN

Kenosha Hills SEC "A" #260

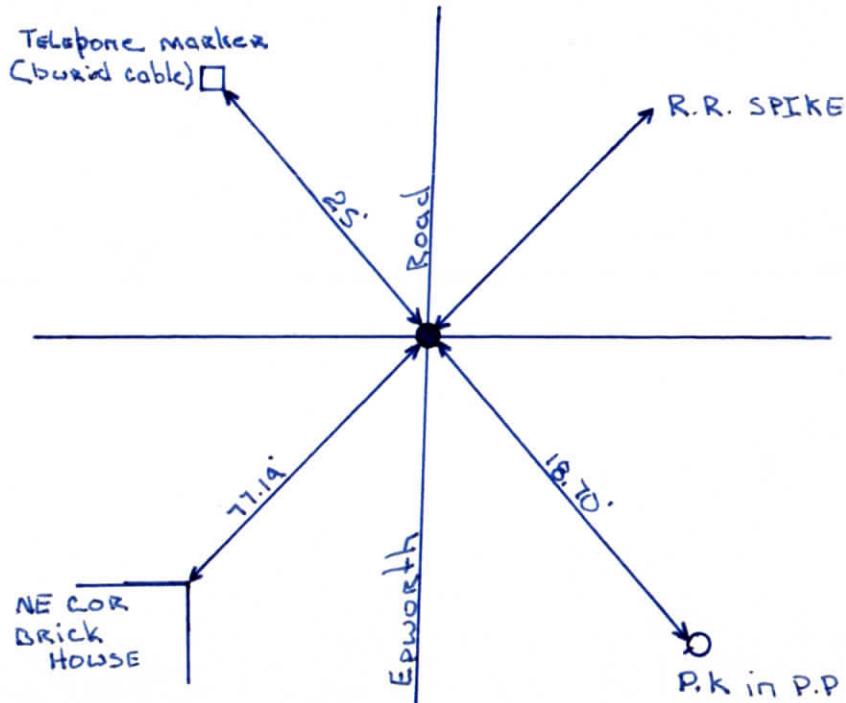
WARRICK COUNTY SURVEYOR

MICHAEL IRVIN

INDICATE CORNER REFERENCED



DESCRIBE CORNER REFERENCED



STATE PLANE COORDINATE DATA

INDIANA ZONE: WEST

X \_\_\_\_\_

Y \_\_\_\_\_

ESTABLISHED BY:

APPROVED BY

DATE

REFERENCED BY:

DATE

Elmo D. Dockery

Feb 9, 1977

CORNER RECORD  
WARRICK COUNTY



DESCRIPTION :

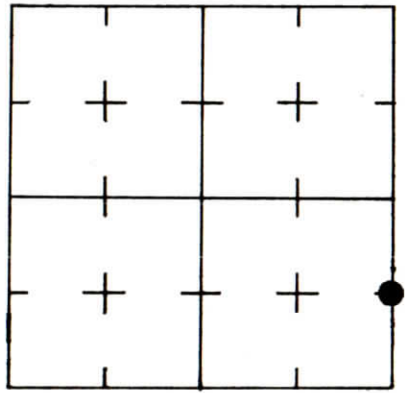
NE CORNER SE<sup>1</sup>/<sub>4</sub> SE<sup>1</sup>/<sub>4</sub>

SECTION 32, T. 6 S. R. 9 W.

2<sup>nd</sup> PRINCIPLE MERIDIAN

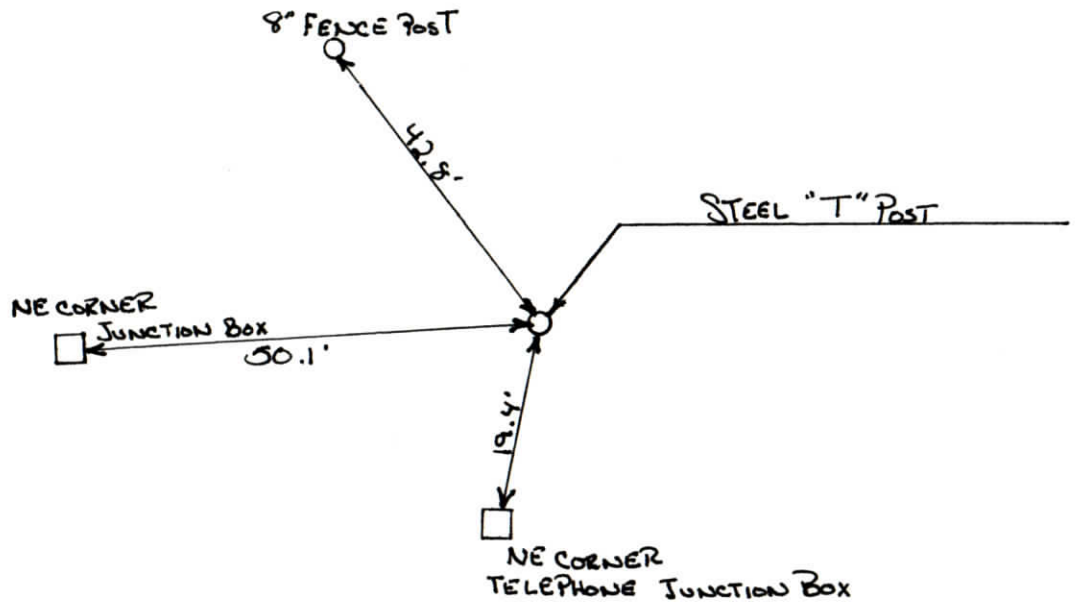
WARRICK COUNTY SURVEYOR  
KARAN HARGRAVE-BARNHILL

INDICATE CORNER REFERENCED



DESCRIBE CORNER REFERENCED

LAKELAND COURT



STATE PLANE COORDINATE DATA

INDIANA ZONE: WEST

X \_\_\_\_\_

Y \_\_\_\_\_

ESTABLISHED BY:

APPROVED BY

DATE

REFERENCED BY:

DATE

WILLIAM Y. BIVINS

9-15-98

**CORNER RECORD  
WARRICK COUNTY**



DESCRIPTION:

SW CORNER SE 1/4 SW 1/4

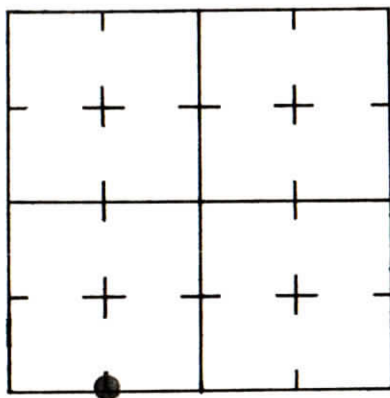
SECTION 32, T. 6 S. R. 9 W.

2<sup>nd</sup> PRINCIPLE MERIDIAN

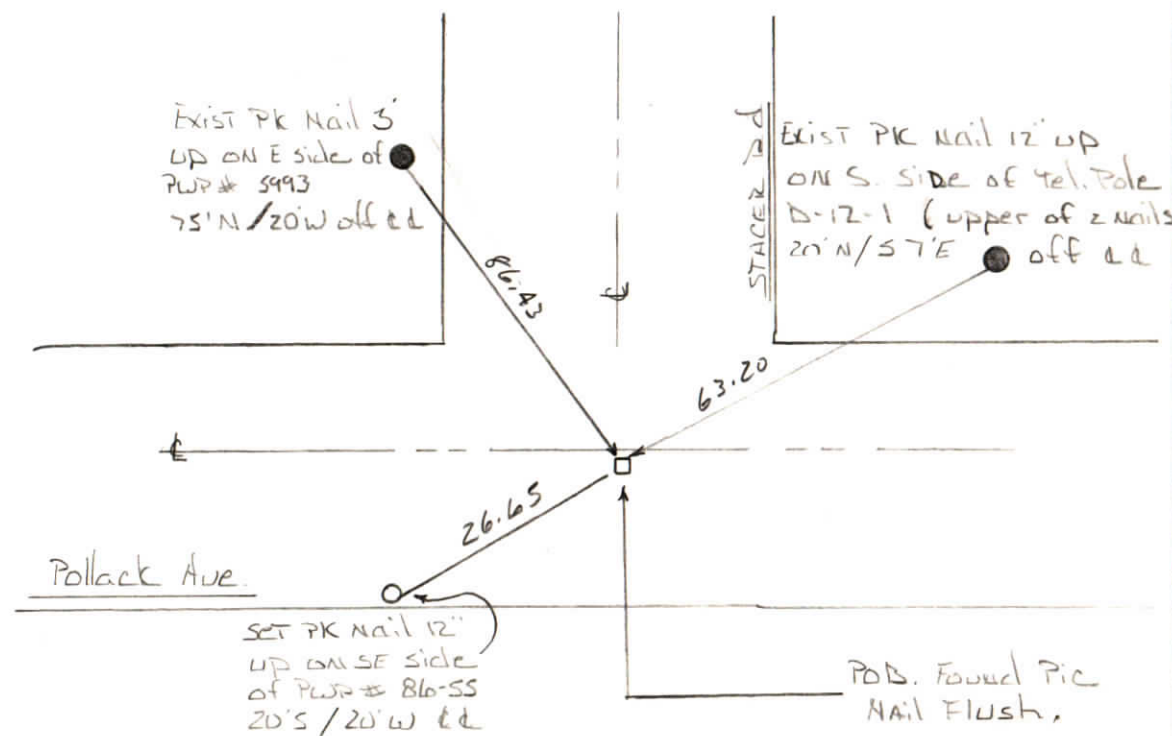
**WARRICK COUNTY SURVEYOR**

**MICHAEL IRVIN**

INDICATE CORNER REFERENCED



DESCRIBE CORNER REFERENCED



STATE PLANE COORDINATE DATA

INDIANA ZONE: WEST

X \_\_\_\_\_

Y \_\_\_\_\_

ESTABLISHED BY:

APPROVED BY

DATE

REFERENCED BY:

DATE

*Andy Easley*

*Aug 11 1993*

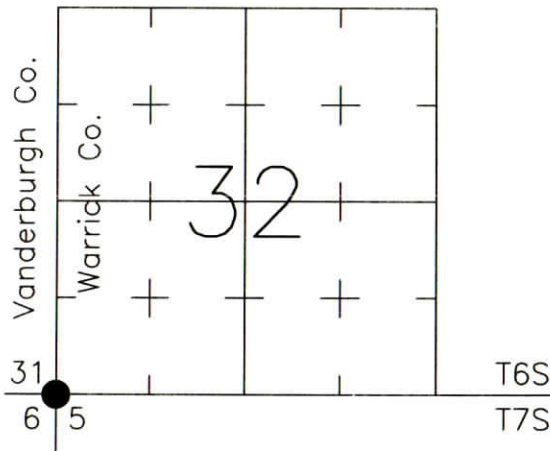
# CORNER RECORD WARRICK COUNTY



DESCRIPTION:  
 SOUTHWEST CORNER \_\_\_\_\_  
 SECTION 32, T. 6 S., R. 9 W.  
 2nd PRINCIPAL MERIDIAN

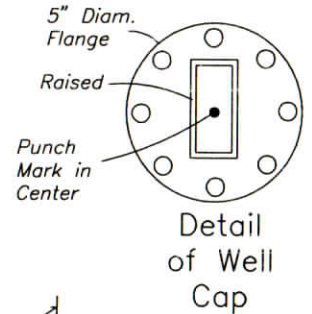
**WARRICK COUNTY SURVEYOR**  
 KARAN HARGRAVE-BARNHILL

INDICATE CORNER REFERENCED:



MONUMENT TYPE: IRON WELL CAP IN MON. BOX FOR NOTES ON CORNER HISTORY SEE REVERSE.

SIZE: 5" DIAM. FLANGE  
 DEPTH/HEIGHT: WELL CAP 4" BELOW PVMT. GRADE  
 REFERENCE TIE DRAWING:



NOTE: Well cap is inside a cast-iron monument box (10" diameter rim of box is flush with asphalt pavement.) Well Cap is 4" below pavement grade.

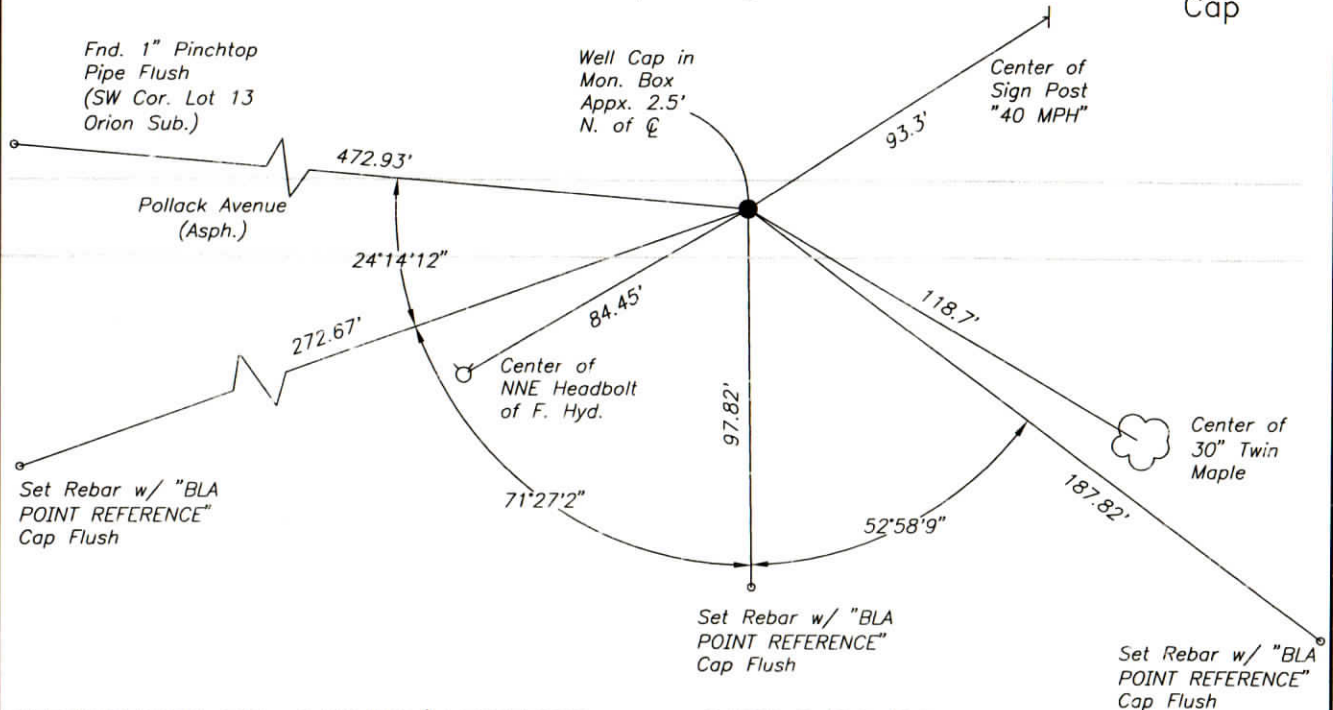
STATE PLANE COORDINATE DATA:  
 INDIANA WEST ZONE, NAD 83 (1997)  
 U.S. SURVEY FEET

X  
 Y

COORDINATES ESTABLISHED BY:

APPROVED BY:

DATE:



REFERENCED BY: R.HAHN/M.BRENDEL DATE: 8/20/02  
 MON. BOX SET 10/29/03 D.DREES/G.M.BURRESS  
 APPROVED BY: P.JONES, RLS#9600016 DATE: 10/31/03

CORNER FILE CODE:  
 T6S-R9W-Z-05

CORNER HISTORY:

CORNER FILE CODE:  
T6S-R9W-Z-05

ORIGINAL USPLS SURVEY: Corner established by Jacob Fowler, Dec. 14, 1805 "Post".

COUNTY SURVEYOR'S BOOKS: Book 1 P. 123: John C. Frary WCS Oct. 23, 1857 "Old Cor. Stone Perpetuated marked S 5".

Vand. Co. Book C, P. 97: Chas. B. Bateman VCS March 29, 1871 "Stone by Warrick Co. Surv".

Vand. Co. Book D, P. 101: H.A.Genung Dep. VCS w/ Mr. Meyers WCS September 14, 1894 "Stone in Road".

Book 3 P. 305: W.J.Wells, Surveyor, April, 1939 "Stone" (I.Pins set 25'S of sec. line @ 977' and 1218' E of corner).

OTHER SURVEYS AND PLATS: "Corner Code System" card shows stone and notes "IP 4-23-57 by S. Biggerstaff".

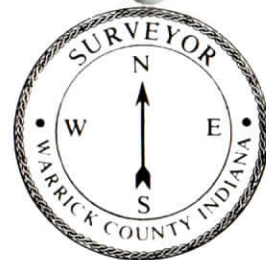
The 1957 plat of Orion Subdivision (Vanderburgh County) ties to the corner (monument not identified).

The Vanderburgh County Surveyor's office provided coordinates (dated 2002) for a found PK nail.

VERIFICATION OF CORNER POSITION: August, 2002: A PK nail was found in place. Ties were made to a 3/4" pipe found at the NE corner of Lot 13 of Orion Subdivision and to 1" pinchtap pipes found at the SW corner of lot 13 and the SE corner of Lot 12; these confirmed the PK nail's position within 0.2'. October, 2003: the PK nail was removed, and the well cap shown was found in place 4" below pavement grade. The well cap is presumed to be the 1957 "IP" by S. Biggerstaff. A monument box was constructed over the well cap, and the reference ties were updated to reflect the slight horizontal discrepancy between the PK nail and the well cap (punch mark on well cap is 0.03' east and 0.05' north of PK nail's former position).

Perry E. Jones 10/31/03

CORNER RECORD  
WARRICK COUNTY



DESCRIPTION:

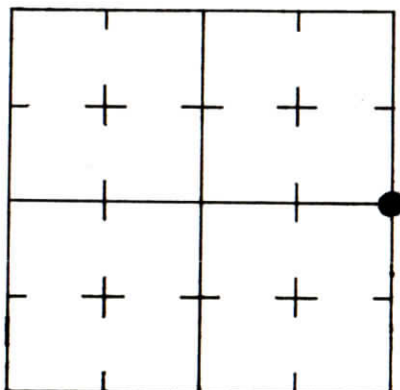
NE CORNER SE 1/4

SECTION 33, T. 6 S. R. 9 W.

2nd PRINCIPLE MERIDIAN

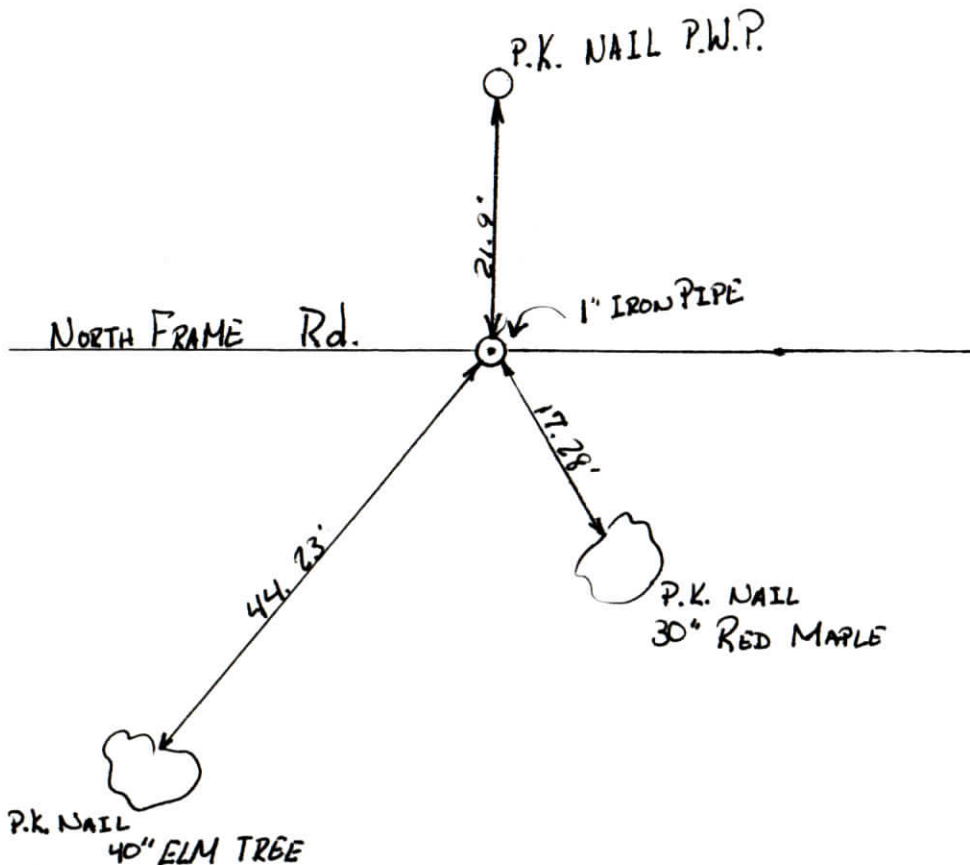
WARRICK COUNTY SURVEYOR  
KARAN HARGRAVE-BARNHILL

INDICATE CORNER REFERENCED



DESCRIBE CORNER REFERENCED

Knob Hill Mobile Home Park



STATE PLANE COORDINATE DATA

INDIANA ZONE: WEST

X \_\_\_\_\_

Y \_\_\_\_\_

ESTABLISHED BY:

APPROVED BY

DATE

REFERENCED BY:

DATE

EDWIN O. BOYD

8-25-80

CORNER RECORD  
WARRICK COUNTY



DESCRIPTION:

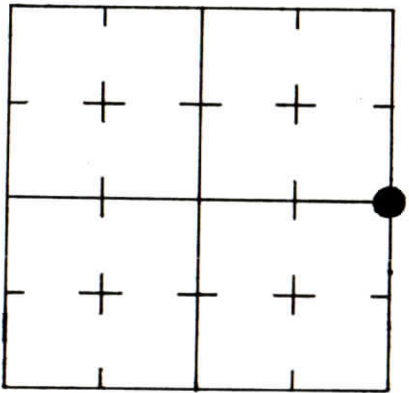
NE CORNER SE 1/4

SECTION 33, T. 6 S. R. 9 W.

2nd PRINCIPLE MERIDIAN

WARRICK COUNTY SURVEYOR  
KARAN HARGRAVE-BARNHILL

INDICATE CORNER REFERENCED



DESCRIBE CORNER REFERENCED

MAPLE NORTH SUB.

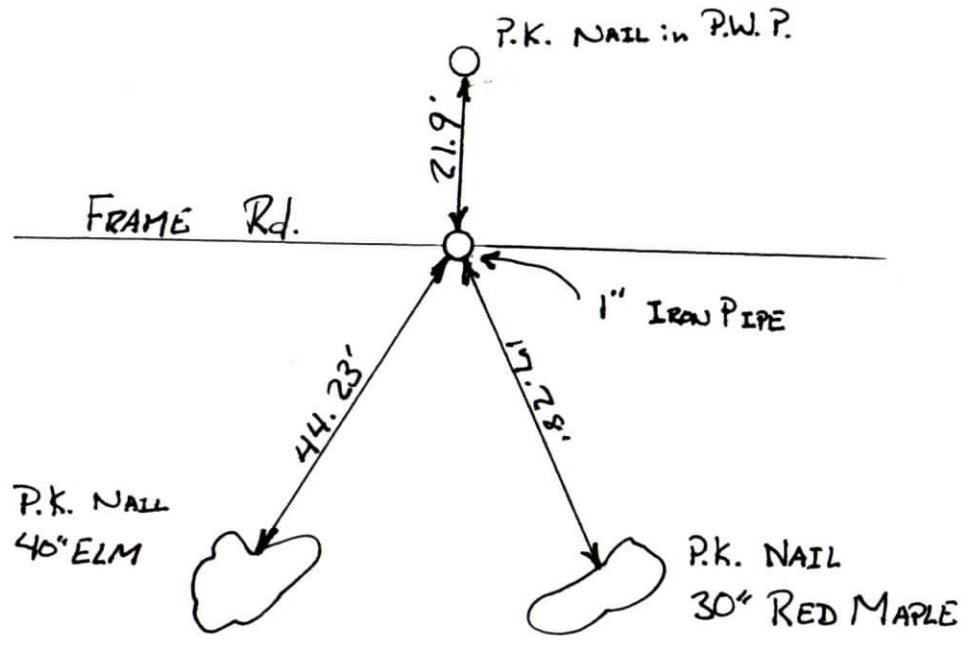
STATE PLANE COORDINATE DATA

INDIANA ZONE: WEST

X \_\_\_\_\_

Y \_\_\_\_\_

ESTABLISHED BY:



APPROVED BY

DATE

REFERENCED BY:

DATE

ELMO D. DOCKERY

4-25-84

CORNER RECORD  
WARRICK COUNTY

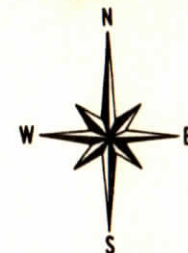
DESCRIPTION: ~~CENTER OF SECTION~~

NW CORNER NW 1/4 SE 1/4

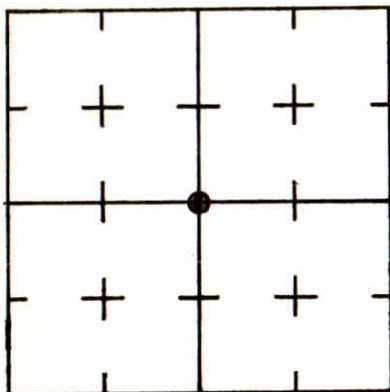
SECTION 33, T. 6 S. R. 9 W.

2<sup>nd</sup> PRINCIPAL MERIDIAN

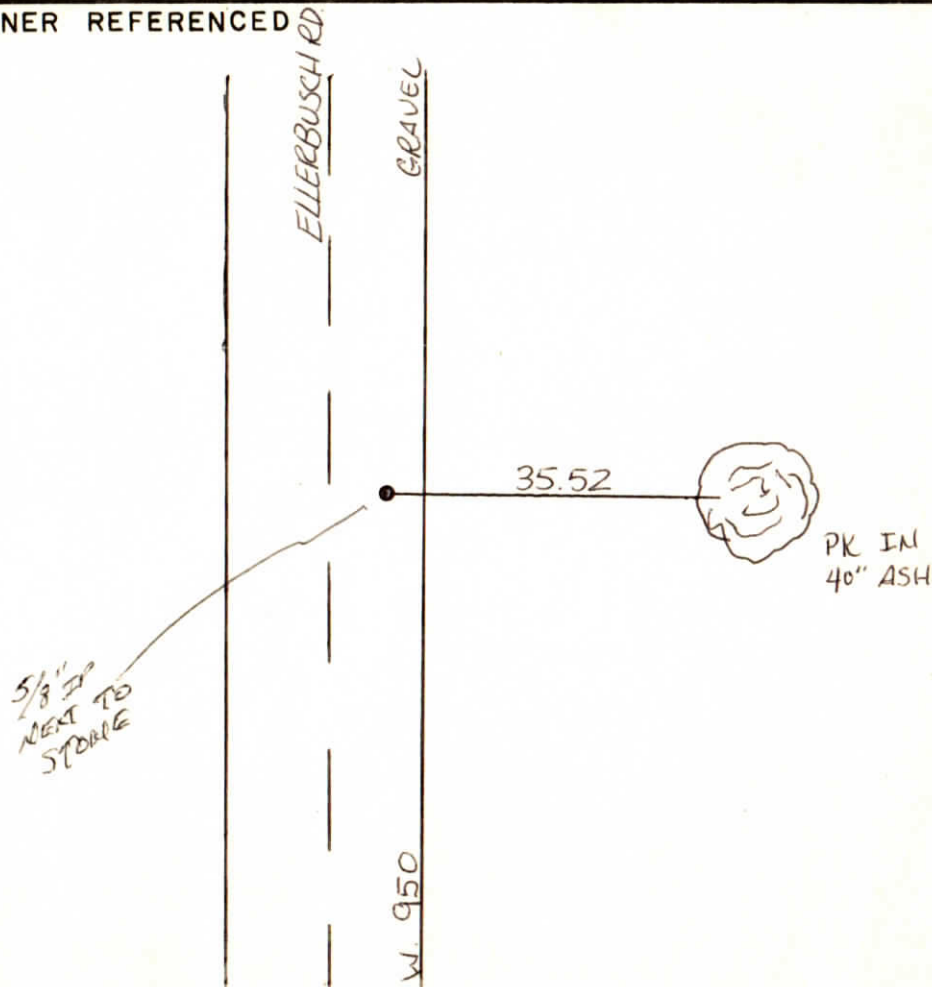
WARRICK COUNTY SURVEYOR  
MICHAEL F. FELDBUSCH, L.S.



INDICATE CORNER REFERENCED



DESCRIBE CORNER REFERENCED



STATE PLANE COORDINATE DATA

INDIANA ZONE: WEST

X \_\_\_\_\_

Y \_\_\_\_\_

ESTABLISHED BY:  
\_\_\_\_\_

APPROVED BY M.F. L.S.  
SET

DATE

REFERENCED BY:

GARY & MIKE

DATE

1-6-84



CORNER RECORD  
WARRICK COUNTY



DESCRIPTION:

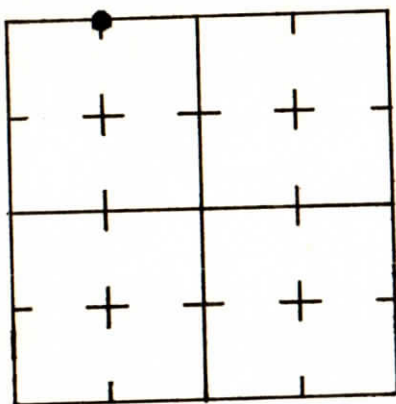
NE CORNER NW 1/4 NW 1/4

SECTION 33, T. 6 S. R. 9 W.

2nd PRINCIPAL MERIDIAN

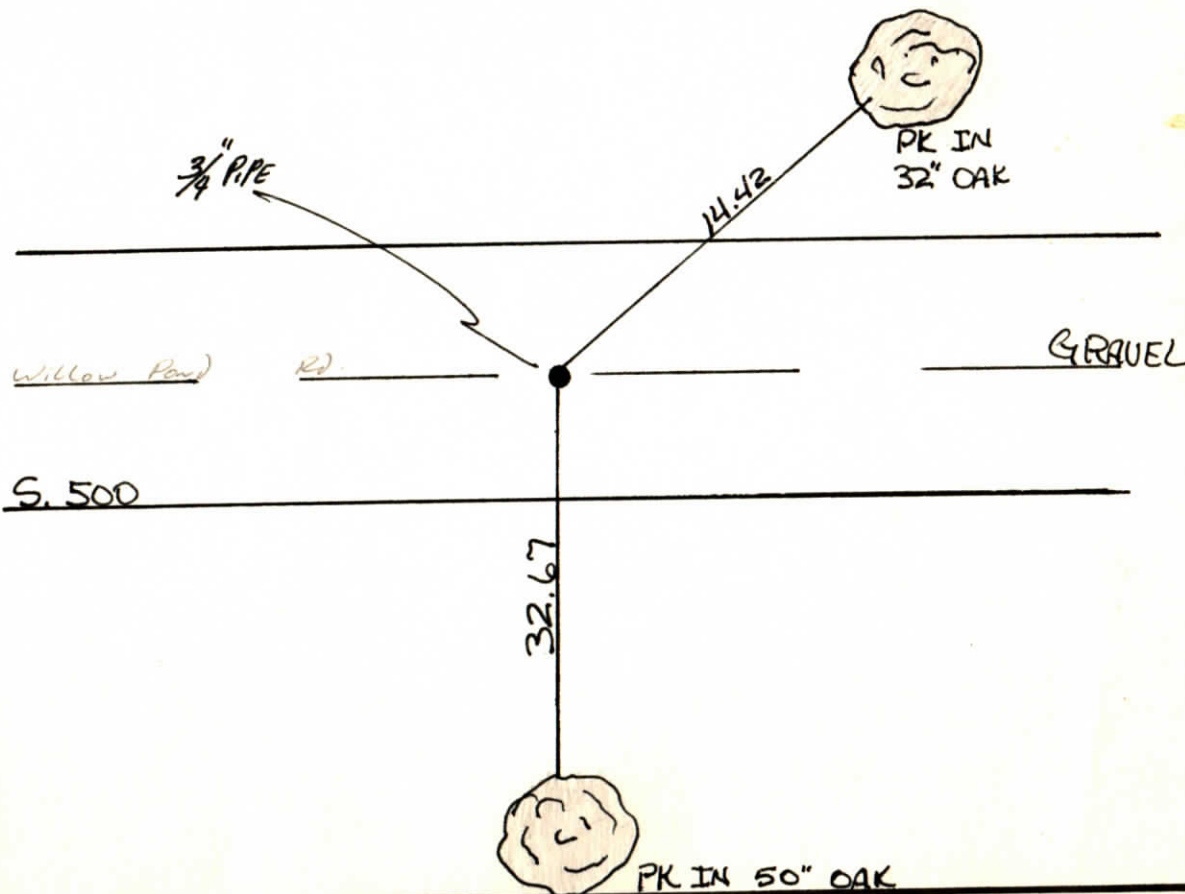
WARRICK COUNTY SURVEYOR  
MICHAEL F. FELDBUSCH, L.S.

INDICATE CORNER REFERENCED



DESCRIBE CORNER REFERENCED

N.V.



STATE PLANE COORDINATE DATA

INDIANA ZONE: WEST

X \_\_\_\_\_

Y \_\_\_\_\_

ESTABLISHED BY:

\_\_\_\_\_

APPROVED BY

DATE

REFERENCED BY:

*Larry Beck*

DATE

4-21-83

CORNER RECORD  
WARRICK COUNTY



DESCRIPTION:

NE CORNER SE 1/4

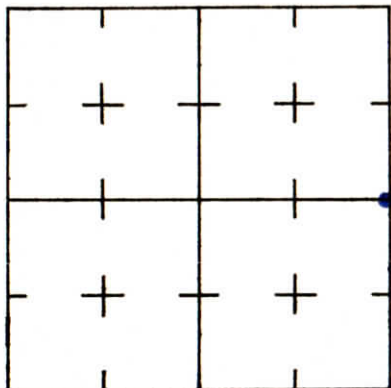
SECTION 33, T. 6 S. R. 9 W.

2<sup>nd</sup> PRINCIPLE MERIDIAN

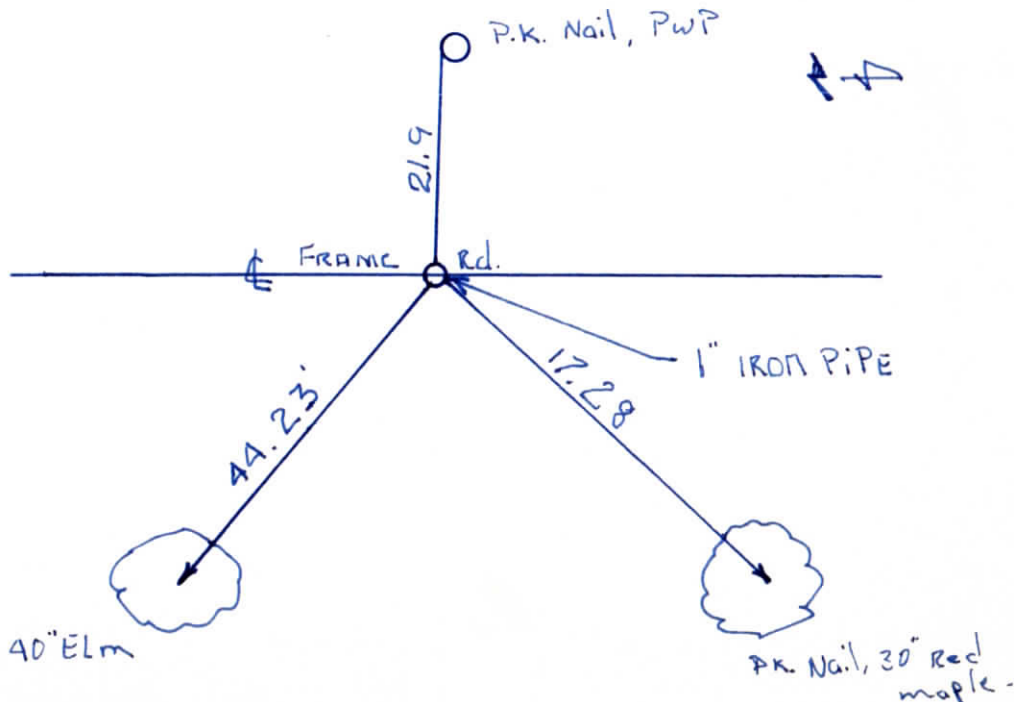
Knob Hill Mobile Home Park.

WARRICK COUNTY SURVEYOR  
MICHAEL IRVIN

INDICATE CORNER REFERENCED



DESCRIBE CORNER REFERENCED



STATE PLANE COORDINATE DATA

INDIANA ZONE: WEST

X \_\_\_\_\_

Y \_\_\_\_\_

ESTABLISHED BY:

APPROVED BY

DATE

REFERENCED BY:

DATE

Edwin O Boyd.

Sept. 10, 1980

CORNER RECORD  
WARRICK COUNTY

DESCRIPTION:

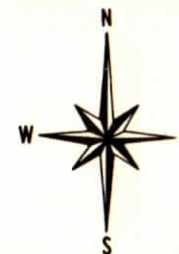
NW CORNER NW/4

SECTION 33, T. 6 S.

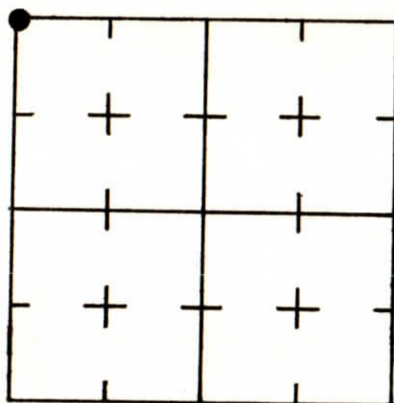
R. 9 W.

2<sup>nd</sup> PRINCIPAL MERIDIAN

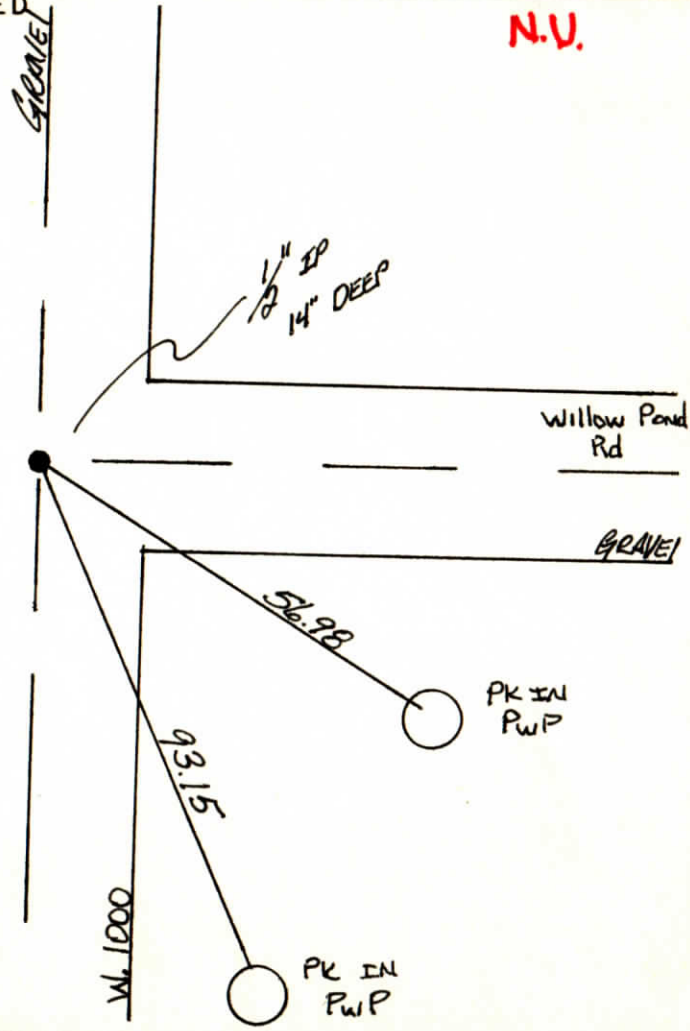
WARRICK COUNTY SURVEYOR  
MICHAEL F. FELDBUSCH, L.S.



INDICATE CORNER REFERENCED



DESCRIBE CORNER REFERENCED



N.V.

STATE PLANE COORDINATE DATA

INDIANA ZONE: WEST

X \_\_\_\_\_

Y \_\_\_\_\_

ESTABLISHED BY:  
\_\_\_\_\_

APPROVED BY

DATE

REFERENCED BY:

DATE

*Ray Beck*

5-31-83

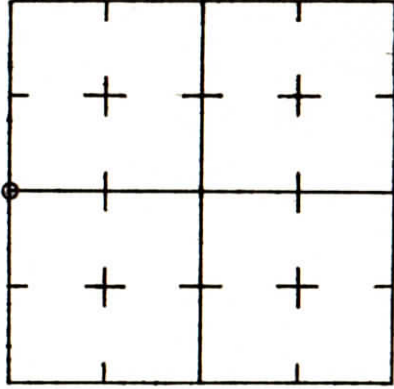
**CORNER RECORD  
WARRICK COUNTY**

**WARRICK COUNTY SURVEYOR  
MICHAEL IRVIN**



DESCRIPTION: **NE CORNER**  $SE\frac{1}{4}$  SECTION **33**, T. **6** S. R. **9** W. **2nd** PRINCIPLE MERIDIAN

INDICATE CORNER REFERENCED



STATE PLANE COORDINATE DATA

INDIANA ZONE: WEST

X

\_\_\_\_\_

Y

\_\_\_\_\_

ESTABLISHED BY: **E. DOCKERY**

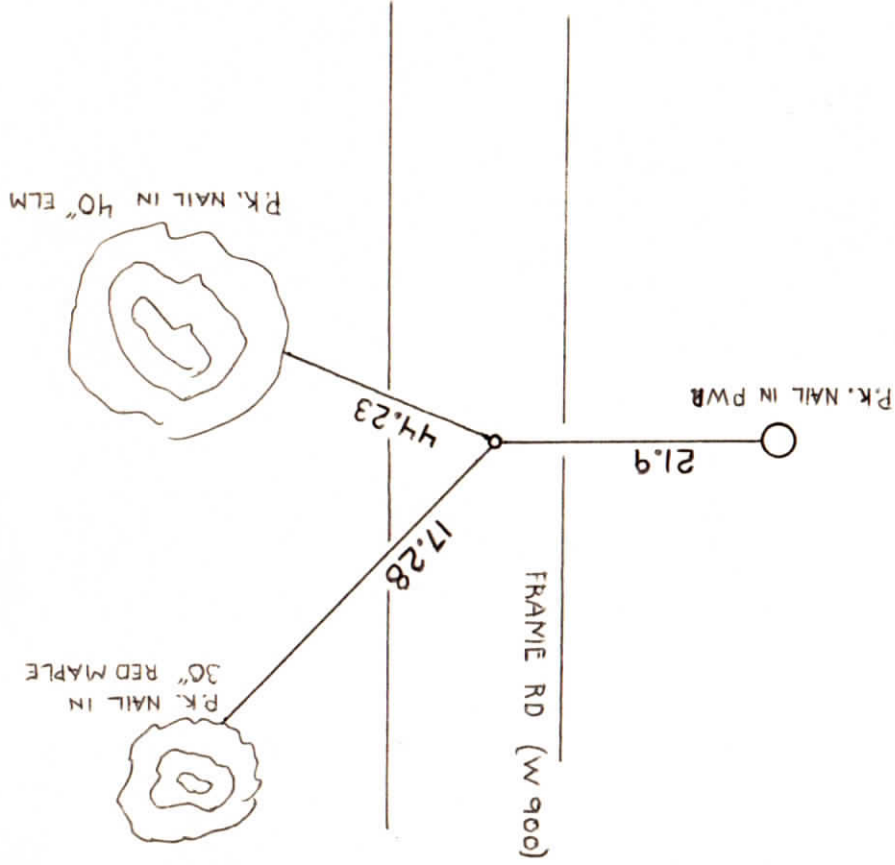
APPROVED BY \_\_\_\_\_

DATE \_\_\_\_\_

REFERENCED BY: \_\_\_\_\_

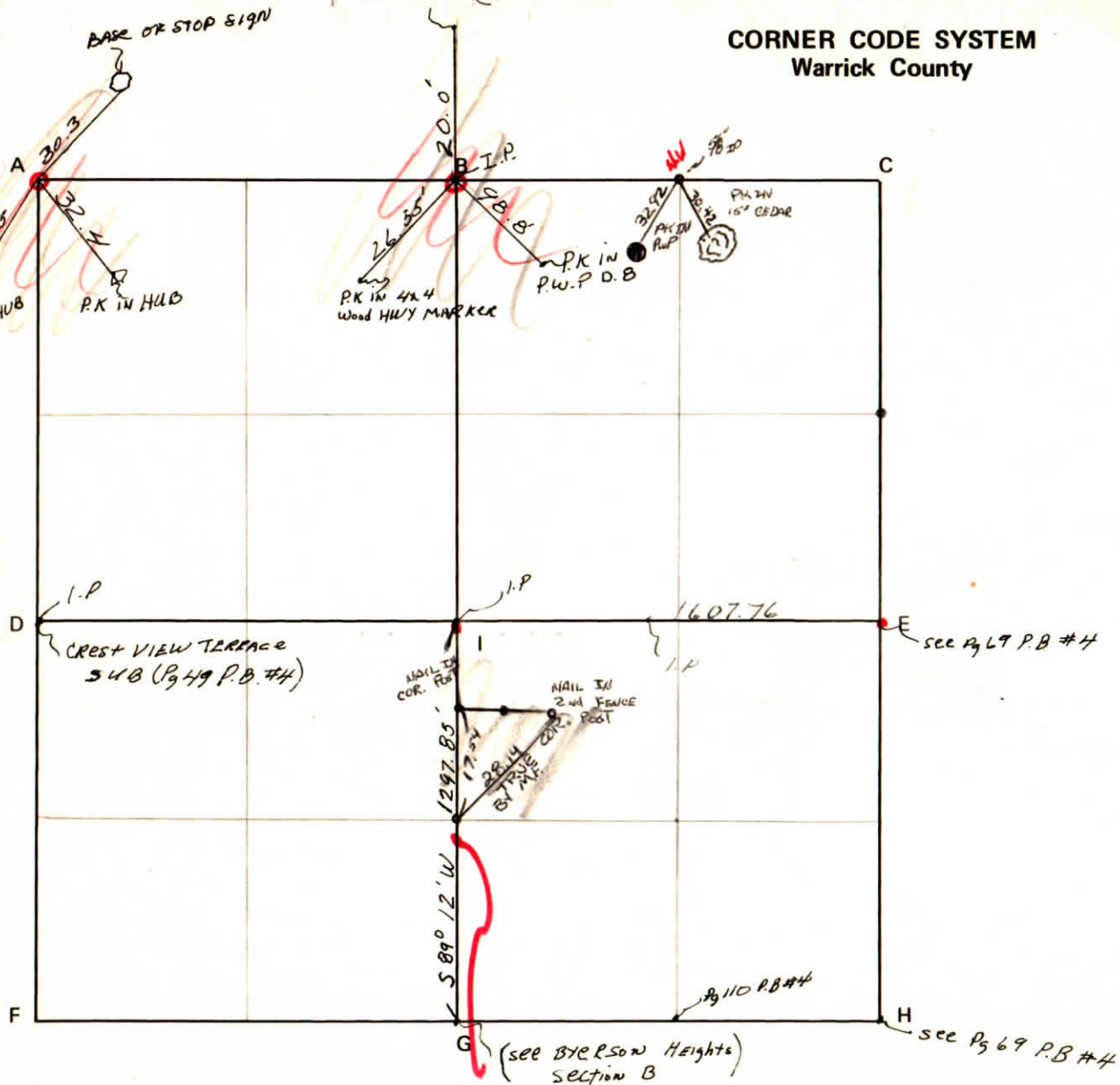
DATE \_\_\_\_\_

DESCRIBE CORNER REFERENCED



CORNER CODE SYSTEM  
Warrick County

NOTES



# RECORD OF SECTION CORNERS

Warrick County

Section 33 Township 6 South Range 9 West 2nd Principle Meridian

Date	Cor	Location	Description of		Distance from Corner	Bearing from Corner (North Assumed)	Cond	Check By	Remarks
			Monument	Reference					
7-9-73 & 7-23-74	A	NW cor NW 1/4	7/8" re-bar & 1/2" rod	<del>1) Post</del> 2) Post NORA	<del>34.9'</del> 34.9'	<del>N 71° E</del> S 37° W	good	GAT	Found in place <del>Post of STOP sign</del> Post of SURVEY MARKER
7-9-73 & 7-26-74	B	NE cor NW 1/4	2" iron pipe (decaying wooden post in 6" tile 0.4' West)	1) iron pipe 2) PK nail 3) PK nail	21.0' 98.8' 26.39'	N 00° S 79° E S 19° W	good	GAT	Found in place 1-3/4" lot pin In PWP # D 8 In post of WATER marker

Moved 7-31-74

CORNER RECORD  
WARRICK COUNTY



DESCRIPTION :

NE CORNER NW<sup>1</sup>/<sub>4</sub>

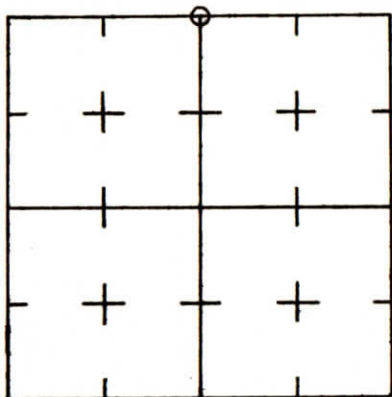
SECTION 33, T. 6 S. R. 9 W.

2<sup>nd</sup> PRINCIPLE MERIDIAN

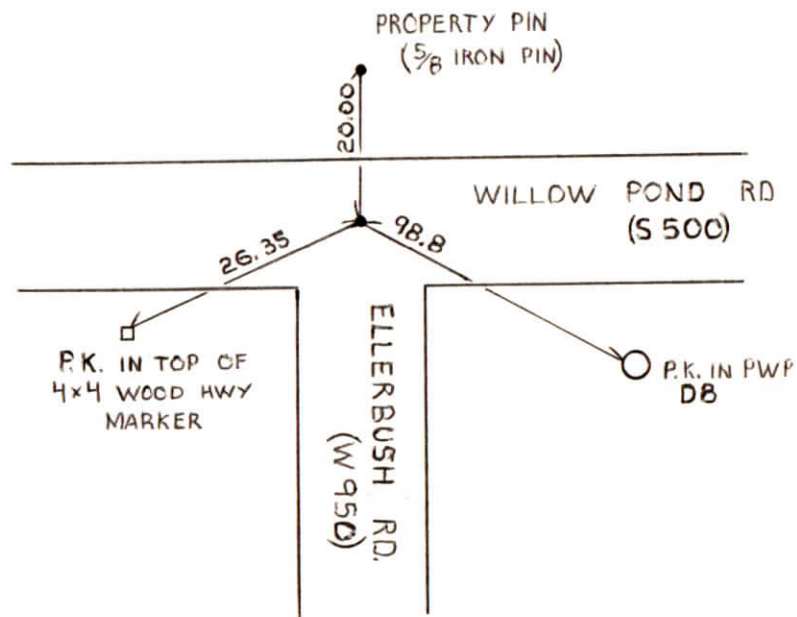
WARRICK COUNTY SURVEYOR

MICHAEL IRVIN

INDICATE CORNER REFERENCED



DESCRIBE CORNER REFERENCED



STATE PLANE COORDINATE DATA

INDIANA ZONE: WEST

X \_\_\_\_\_

Y \_\_\_\_\_

ESTABLISHED BY:

APPROVED BY

NOT VERIFIED

DATE  
7-9-73

REFERENCED BY:

DATE

~~AP0049~~

~~NE corner NW $\frac{1}{4}$  + NW corner NE $\frac{1}{4}$  533 T65R9w +  
SE corner SW $\frac{1}{4}$  + SW corner SE $\frac{1}{4}$  528 T66R9w~~

Type Monument: 1" iron pipe with RR spike in center

Date referenced: 7-9-73

referenced by: SWC

7-26-79  
JST

NE COR NW $\frac{1}{4}$

33 T65R9w

?



CORNER RECORD  
WARRICK COUNTY

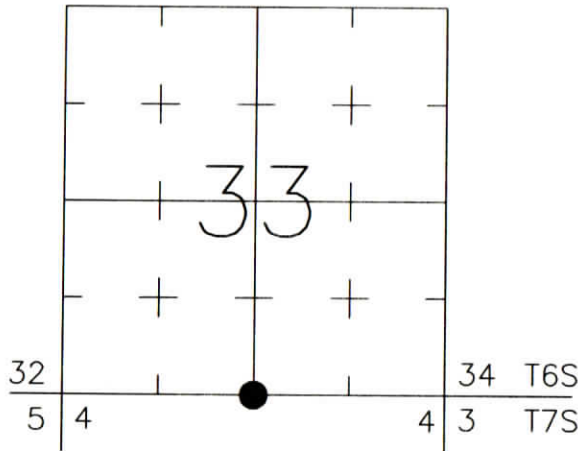


DESCRIPTION:  
SOUTHWEST CORNER SOUTHEAST QUARTER  
SECTION 33, T. 6 S., R. 9 W.  
2nd PRINCIPLE MERIDIAN

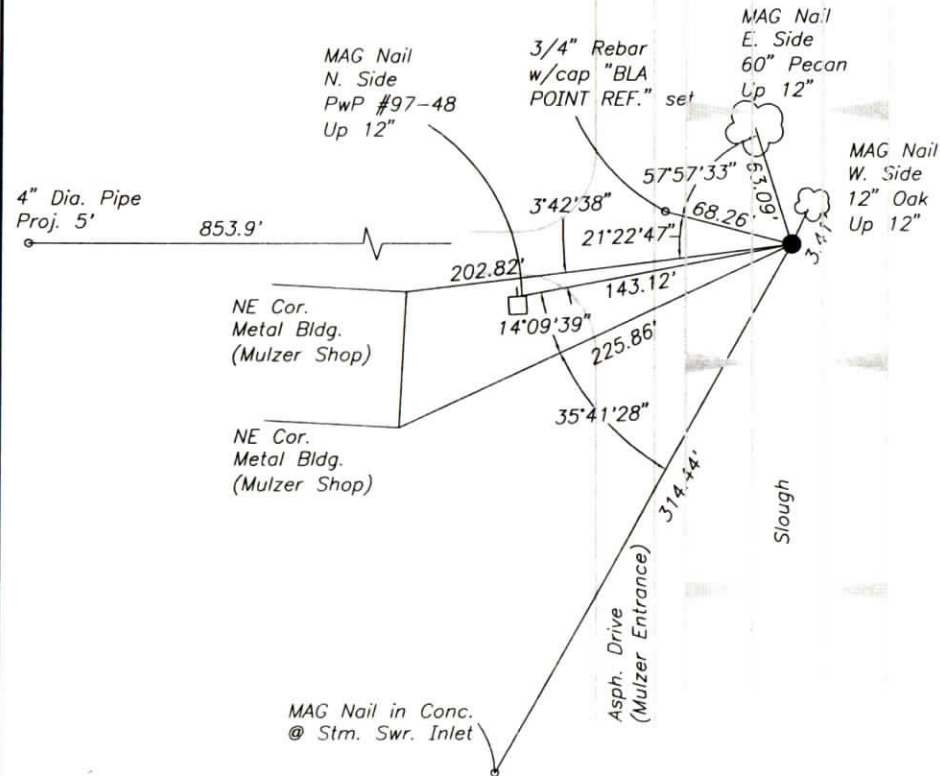
WARRICK COUNTY SURVEYOR  
KARAN HARGRAVE-BARNHILL

FOR NOTES ON CORNER HISTORY SEE REVERSE.

INDICATE CORNER REFERENCED:



MONUMENT TYPE: IRON ROD  
SIZE: 1" DIA.  
DEPTH/HEIGHT: PROJ. 18"  
REFERENCE TIE DRAWING:



STATE PLANE COORDINATE DATA:  
INDIANA WEST ZONE, NAD 83 (1997)  
U.S. SURVEY FEET

X \_\_\_\_\_

Y \_\_\_\_\_

COORDINATES ESTABLISHED BY:

APPROVED BY:

DATE:

REFERENCED BY: D. DREES/  
G.M. BURRESS

APPROVED BY: P.JONES, RLS#9600016

DATE: 8/22/02

DATE: 3/12/03

CORNER FILE CODE:  
T6S-R9W-Z-11

CORNER HISTORY:

CORNER FILE CODE:  
T6S-R9W-Z-11

ORIGINAL USPLS SURVEY: Corner established by Jacob Fowler, Dec. 14, 1805 "Post".

COUNTY SURVEYOR'S BOOKS: Book 3 P. 203: Louis Meyer WCS Oct. 16, 1914 (Sand Stone set apparently on sec. line, just west of corner).

Book 3 P. 203 Wm. H. Temme, C.E. Dep. WCS May 19, 1917 "SandStone placed on bank of slough 49' E of true corner".

OTHER SURVEYS AND PLATS: No Co. Surv. references, no recorded surveys/subdivisions found.

VERIFICATION OF CORNER POSITION: August 2002; the 1" iron rod shown was found in place. A search was made for the witness stones set on the section line at the east and west sides of the slough, but neither was found. Site conditions suggest that the slough may have widened significantly due to erosion or dredging. March, 2003; ties were made to a property marker 853.9' west of the iron iron rod, and an apparent 1/4-1/4 corner 1205.3' west of the iron rod. Based on dimensions from Deed File 2, Card 14000, these points suggest a location approximately 12' north and 20' west of the iron rod; however, since no monuments were called for in the deed, the iron rod was accepted as found in place.

Perry E. Jones 3/12/03

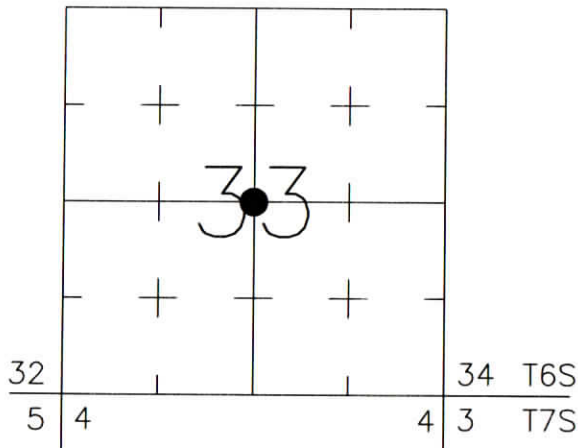
CORNER RECORD  
WARRICK COUNTY



DESCRIPTION:  
SOUTHWEST CORNER NORTHEAST QUARTER  
SECTION 33, T. 6 S., R. 9 W.  
2nd PRINCIPLE MERIDIAN

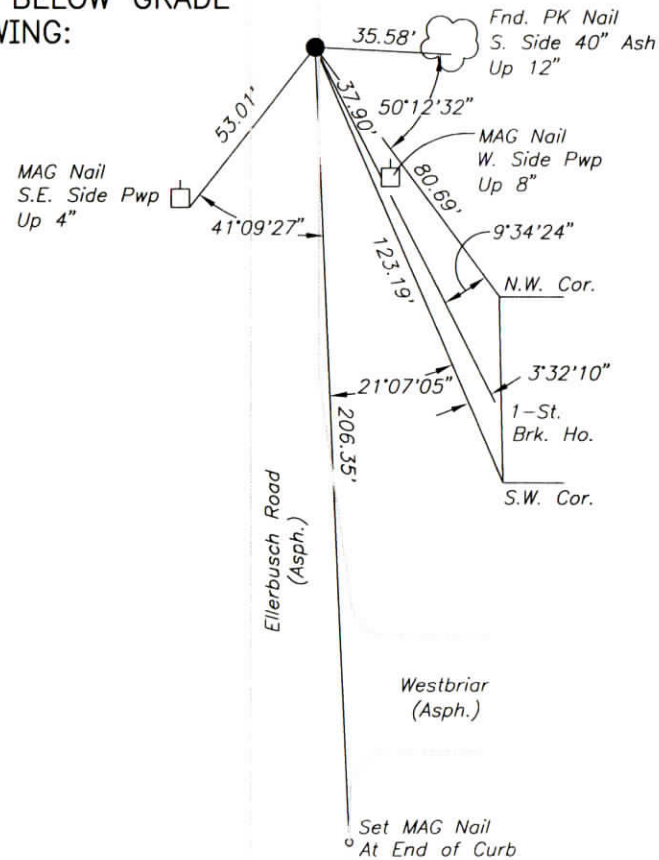
WARRICK COUNTY SURVEYOR  
KARAN HARGRAVE-BARNHILL

INDICATE CORNER REFERENCED:



MONUMENT TYPE: REBAR  
SIZE: 5/8" DIA.  
DEPTH/HEIGHT: 6" BELOW GRADE  
REFERENCE TIE DRAWING:

FOR NOTES ON CORNER HISTORY SEE REVERSE.



STATE PLANE COORDINATE DATA:  
INDIANA WEST ZONE, NAD 83 (1997)  
U.S. SURVEY FEET

X ----

Y ----

COORDINATES ESTABLISHED BY:

APPROVED BY:

DATE:

REFERENCED BY: K.KLEIN/M.BURRESS

APPROVED BY: P.JONES, RLS#9600016

DATE: 8/27/02

DATE: 9/12/02

CORNER FILE CODE:  
T6S-R9W-X-11

CORNER HISTORY:

CORNER FILE CODE:  
T6S-R9W-X-11

ORIGINAL USPLS SURVEY: (Center of Section not monumented by USPLS Survey)

COUNTY SURVEYOR'S BOOKS: Book 3 P. 141: Louis Meyer WCS Nov. 10, 1909 "Sand Stone set".

Book 3 P. 203: C. Warren Abbott Dep. WCS April 3, 1922 "Old Stone found in place".

Book 3 P. 265 B.C.Samples Surveyor Aug. 27, 1929 "Corner Stone found in place".

OTHER SURVEYS AND PLATS: "Corner Record" card shows a 1984 reference to a 5/8" IP next to stone.

VERIFICATION OF CORNER POSITION: August, 2002: The 5/8" rebar shown was found in place, the measured distance to a PK nail found in an Ash tree matched the Corner Record card dimension within 0.06'. The stone mentioned on the Corner Record card was searched for by digging and probing around the rebar, but was not found.

Perry E. Jones 9/12/02

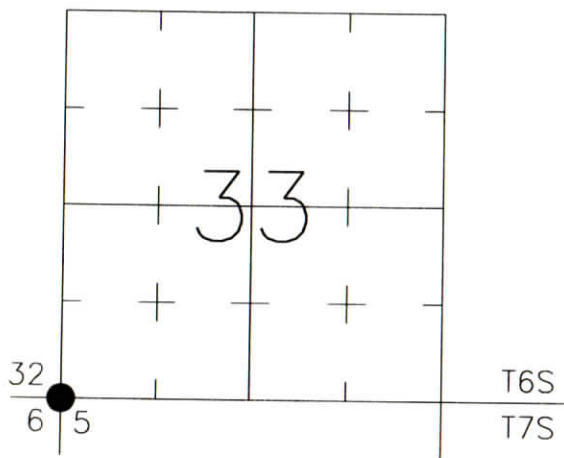
# CORNER RECORD WARRICK COUNTY



DESCRIPTION:  
 SOUTHWEST CORNER \_\_\_\_\_  
 SECTION 33, T. 6 S., R. 9 W.  
 2nd PRINCIPAL MERIDIAN

**WARRICK COUNTY SURVEYOR**  
 JAMES NIEMEYER

INDICATE CORNER REFERENCED:



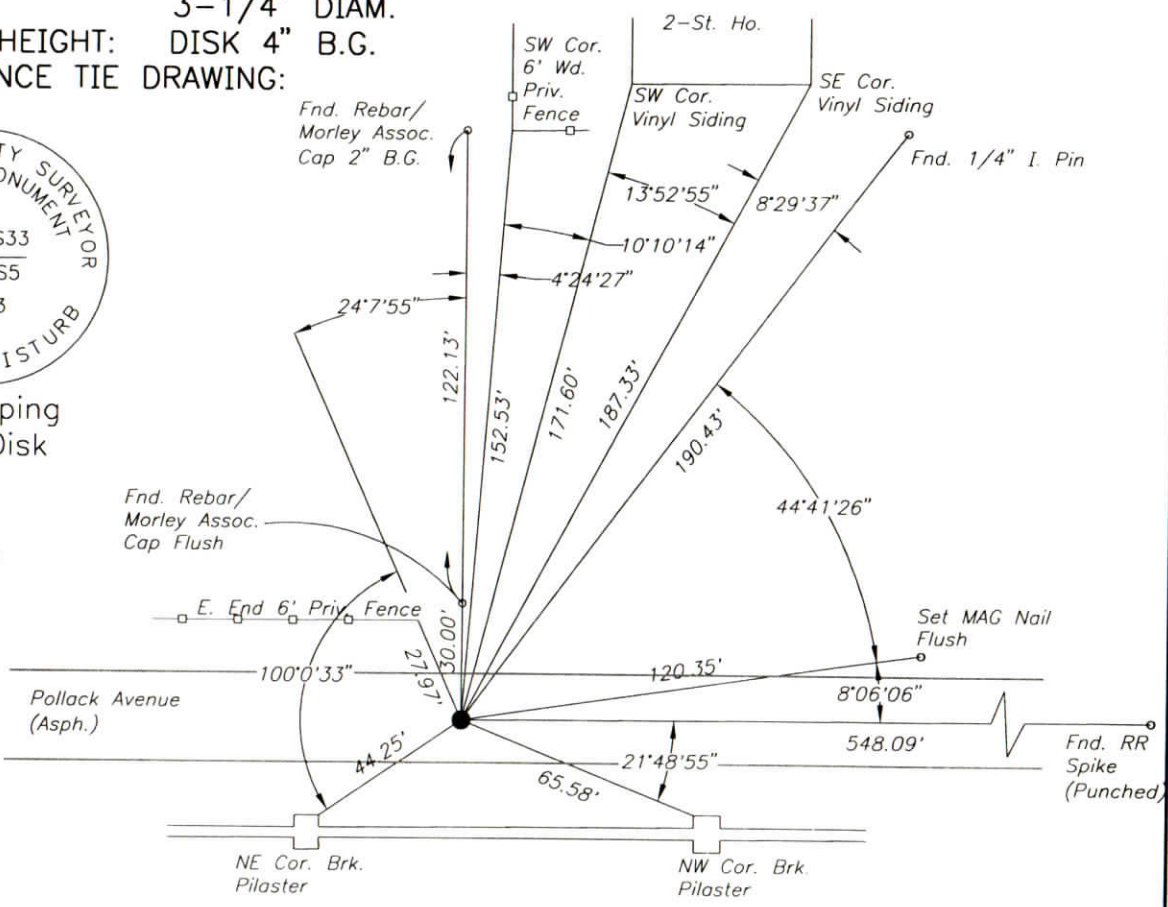
MONUMENT TYPE: ALUM. DISK IN MON. BOX  
 SIZE: 3-1/4" DIAM.  
 DEPTH/HEIGHT: DISK 4" B.G.  
 REFERENCE TIE DRAWING:

FOR NOTES ON CORNER HISTORY SEE REVERSE.



Stamping  
on Disk

NOTE: Alum. disk is inside a cast-iron monument box (10" diameter rim of box is flush with asphalt pavement.) Disk is 4" below pavement grade.



STATE PLANE COORDINATE DATA:  
 INDIANA WEST ZONE, NAD 83 (1997)  
 U.S. SURVEY FEET

X \_\_\_\_\_  
 Y \_\_\_\_\_

COORDINATES ESTABLISHED BY:

APPROVED BY:

DATE:

REFERENCED BY: D.DREES/K.KLEIN DATE: 8/28/02  
 DISK SET 10/30/03 D.DREES/G.M.BURRESS  
 APPROVED BY: P.JONES, RLS#9600016 DATE: 10/31/03

Rev.: 9/9/05 Section Number corrected. P.E.J.

CORNER FILE CODE:  
 T6S-R9W-Z-09

CORNER HISTORY:

CORNER FILE CODE:  
T6S-R9W-Z-09

ORIGINAL USPLS SURVEY: Corner established by Jacob Fowler, Dec. 14, 1805 "Post".

COUNTY SURVEYOR'S BOOKS: Book 1 P. 112: John C. Frary WCS Feb. 1859 "Marked Post - Orig. Tree NW Perpetuated".

Book 3 P. 286 June 14, 1933 "SandStone Corner" (iron pipes set 100'S, 312.5'S, 535' S, 187.0'N, 250.5'E, 300.0'E).

OTHER SURVEYS AND PLATS: "Corner Record" card shows a reference to a PK nail as taken from the 1973 plat of Lakeland Court.

The 1973 plat of Powers Place ties to the corner (no monument identified).

The plat of the Village at River Walk PRUD (Doc. 2001-011149) shows a PK nail found.

VERIFICATION OF CORNER POSITION: August 2002, no monument was found (apparently destroyed by sewer construction). The corner position was re-established using plat dimensions from The Village at River Walk, PRUD, Phase 1, and rebars with Morley & Associates caps found at the NW corner of Lot 3 and the SW corner of Lot 1 of said subdivision, and a PK nail found at the SE corner of the subdivision. The measured distance to a RR spike at the NE corner of Powers Place subdivision agreed within 0.1' of dimensions from the Powers Place plat. The re-established corner position was marked with a MAG nail 8/28/02 (Temporary, permanent monument to be set). October 30, 2003: the MAG nail was replaced with the aluminum disk in monument box shown.

Perry E. Jones 10/31/03

# CORNER RECORD WARRICK COUNTY

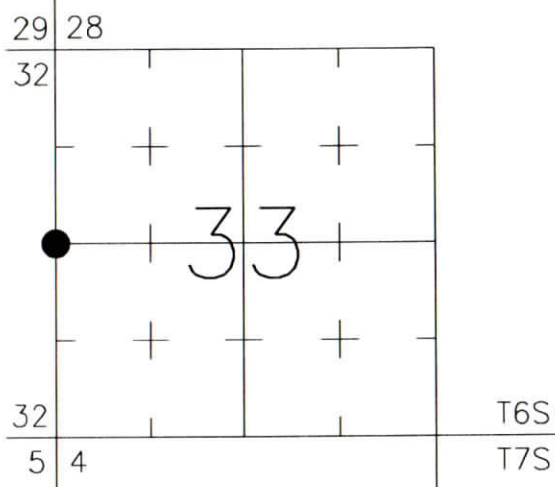


DESCRIPTION:  
SOUTHWEST CORNER NORTHWEST QUARTER  
SECTION 33, T. 6 S., R. 9 W.  
2nd PRINCIPAL MERIDIAN

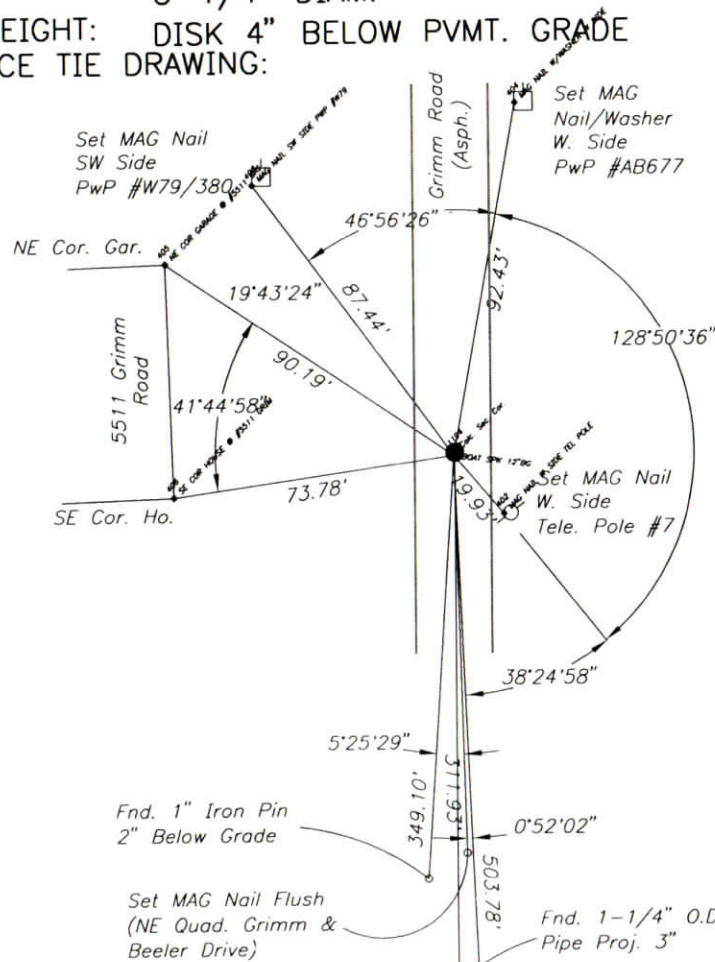
**WARRICK COUNTY SURVEYOR**  
JAMES NIEMEYER

FOR NOTES ON CORNER HISTORY SEE REVERSE.

INDICATE CORNER REFERENCED:



MONUMENT TYPE: ALUM. DISK IN MON. BOX  
SIZE: 3-1/4" DIAM.  
DEPTH/HEIGHT: DISK 4" BELOW PVMT. GRADE  
REFERENCE TIE DRAWING:



NOTE: Alum. disk is inside a cast-iron monument box (10" diameter rim of box is flush with asphalt pavement.)  
Disk is 4" below pavement grade.

STATE PLANE COORDINATE DATA:  
INDIANA WEST ZONE, NAD 83 (1997)  
U.S. SURVEY FEET

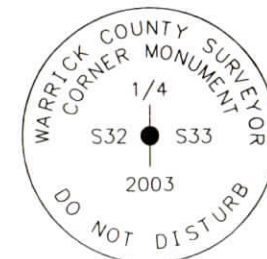
X ---

Y ---

COORDINATES ESTABLISHED BY:

APPROVED BY:

DATE:



Stamping on Disk

Rev.: 9/9/05 Section Number corrected. P.E.J.

REFERENCED BY: R.HAHN,R.HARLAN  
DISK SET 10/31/03 D.DREES/G.M.BURRESS  
APPROVED BY: P.JONES, RLS#9600016  
DATE: 2/13/03  
DATE: 11/03/03

CORNER FILE CODE:  
T6S-R9W-X-09

CORNER HISTORY:

CORNER FILE CODE:  
T6S-R9W-X-09

ORIGINAL USPLS SURVEY: Corner established by Jacob Fowler, Dec. 19, 1805 "Post".

COUNTY SURVEYOR'S BOOKS: Book 1 P. 112: John C. Frary WCS Feb. 1859 "Mulberry Post Marked"

OTHER SURVEYS AND PLATS: "Corner Code System" card shows an I.P. and refers to Crestview Terrace Subdivision.

The plat of Crestview Terrace Subdivision ties to an iron pin marking the corner.

VERIFICATION OF CORNER POSITION: September, 2002: No monument was found marking the corner. Its position was re-established using lot corner monuments in Crestview Terrace. Specifically, a pipe marking the northeast corner of Lot 4 was used, and a pipe marking the northeast corner of Lot 11 was used for orientation to re-establish the plat bearing system. Monuments marking several other lot corners were checked and generally matched plat dimensions within 0.3 foot. Plat bearings and distances were then used to calculate the corner position, with an estimated re-establishment uncertainty of 1 foot. 2/13/03 the re-established position was marked with a MAG nail (Temporary; a permanent monument to be set in the future). October 31, 2003: during construction of a monument box, a previously-undiscovered boat spike was found 12" below pavement grade, 0.28' west and 0.82' south of the re-established position (temporary MAG nail). The boat spike's position being within the re-establishment uncertainty mentioned above, it was accepted as the corner monument and replaced with the aluminum disk in monument box shown. Reference ties were updated to reflect the boat spike's position.

Perry E. Jones 10/31/03